

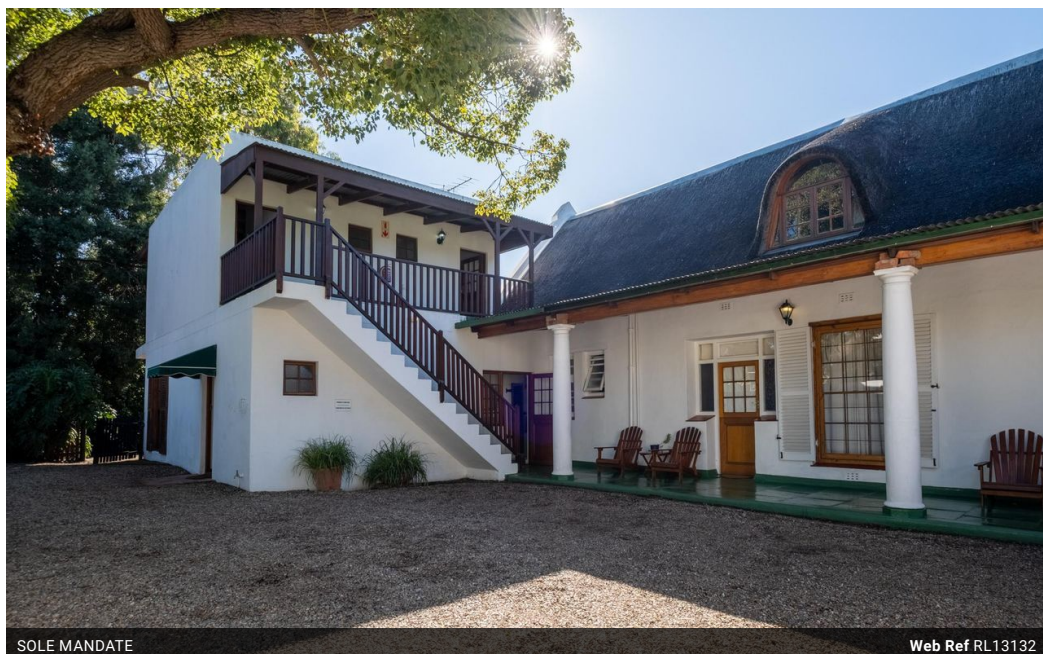


**Pieter van Zyl**  
0825759862  
pietervanzyl@meridianrealty.co.za

Contact **Virtual Office**

086 1732589

Loft Office 6  
The Woodmill Lifestyle Centre  
Vredenburg Road  
Devonvallei  
Stellenbosch  
7600



SOLE MANDATE

Web Ref RL13132



**R3,950,000**

 9  9.5

**Monthly Bond Repayment** R40,771.44  
Calculated over 20 years at 11% with no deposit.

**Transfer Costs** R275,550.00 **Bond Costs** R51,610.00  
These calculations are only a guide. Please ask your conveyancer for exact calculations.

**Monthly Rates** R2,100

**B&B or House - self-sustainable enterprise.**

Exclusive Sole Mandate on offer only by us.

The perfect opportunity that you have been looking for. Invest now and start to receive a return on the investment on a day-to-day basis.

This property is currently used as a B&B and on offer is a VAT registered going concern with the correct zoning, Residential 5. Furniture and linen plus a structured hand-over, of this truly successful Guest House in Worcester, Wykeham Lodge, is included in this offer.

This property does offer a number of options if a B&B / Guesthouse is not what you are looking for. It can be a primary residence with the option to also generate a very good income or it can be what you always dream about ... your own business premises. This property can even become a shared with partners weekend destination or remote working residence and it is...

**Features**

<b>Pets Allowed</b>	Yes		
<b>Interior</b>		<b>Exterior</b>	<b>Sizes</b>
Bedrooms	9	Carports / Parkings	9
Bathrooms	9.5	Security	Yes
Kitchens	1	Pool	Yes
Recep. Rooms	2		
Studies	1		
			Floor Size
			Land Size
			480m <sup>2</sup>
			1,026m <sup>2</sup>

