



**Judy Joubert**  
0828736988  
judy@meridianrealty.co.za



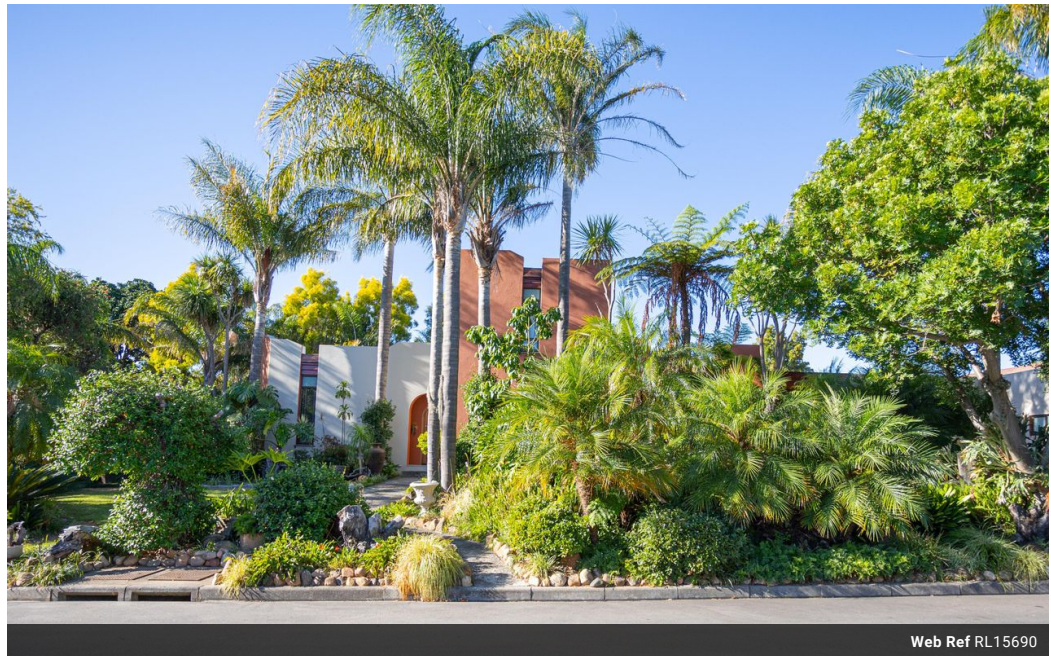
**Simone de Wet**  
0727265521

simone.dewet@meridianrealty.co.za

**Contact Virtual Office**

086 1732589

Loft Office 6  
The Woodmill Lifestyle Centre  
Vredenburg Road  
Devonvallei  
Stellenbosch  
7600



Web Ref RL15690



**R3,600,000**

**Monthly Bond Repayment** R37,158.78  
Calculated over 20 years at 11% with no deposit.

**Transfer Costs** R232,714.00    **Bond Costs** R47,840.00  
These calculations are only a guide. Please ask your conveyancer for exact calculations.

 4     3.5     3

**Family Comfort in the Heart of Wellington**

Tucked away in the heart of the enchanting Cape Winelands, this isn't just a house—it's an invitation to experience a life of family comfort and heartfelt warmth. This family home, with its blend of charm and conveniences, offers the perfect space for both lively gatherings and tranquil family moments.

The front garden is a burst of color and life, with vibrant flowers, leafy greenery, and the gentle rustle of leaves in the Cape Winelands breeze. It's more than just a pretty entrance—it sets the mood for what's inside. The pathway, dappled with sunlight filtering through the trees, invites you to slow down, take a deep breath of the fresh, fragrant air, and feel right at home.

The four spacious bedrooms, each featuring built-in cupboards and fans, are ideal for large families. One of the bedrooms can comfortably be converted...

**Features**

Interior		Exterior		Sizes	
Bedrooms	4	Garages	3	Floor Size	385m <sup>2</sup>
Bathrooms	3.5	Security	No	Land Size	1,092m <sup>2</sup>
Kitchens	1	Pool	Yes		
Recep. Rooms	3	Views	False		
Furnished	No				

