



Sonja Thielen
0837960404
sonja@meridianrealty.co.za

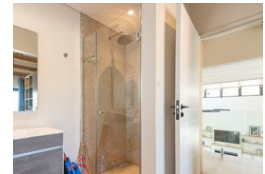
Contact **Virtual Office**

086 1732589

Loft Office 6
The Woodmill Lifestyle Centre
Vredenburg Road
Devonvallei
Stellenbosch
7600



Web Ref RL15602



R15,995,000

 4  4  2

Monthly Bond Repayment R165,098.53
Calculated over 20 years at 11% with no deposit.

Transfer Costs R1,729,871.00 **Bond Costs** R113,285.00

These calculations are only a guide. Please ask your conveyancer for exact calculations.

Monthly Levy R2,800 **Monthly Rates** R3,480

Secure Family Home With Magnificent Views in Kingsview Estate.

Designed for discerning individuals who appreciate comfort and sustainability, this home is an oasis of peace and sophistication. Experience the ease of luxurious vinyl flooring throughout, ensuring effortless maintenance and a timeless aesthetic. The double-volume living area, adorned with a cozy gas fireplace, creates a warm and inviting atmosphere. Four en-suite bedrooms, each equipped with air conditioning, provide private havens of relaxation. The guest suite is on the ground floor and has a private entrance.

The indoor braai room seamlessly flows onto an expansive outdoor entertainment area with a sparkling saltwater pool and breathtaking mountain views. This home is designed for eco-conscious living with solar panels(20), an inverter and battery system, and a reverse osmosis water purification system. You'll have peace...

Features

Pets Allowed		Interior		Exterior		Sizes	
	Yes	Bedrooms	4	Garages	2	Floor Size	425m ²
		Bathrooms	4	Security	Yes	Land Size	560m ²
		Kitchens	1	Pool	Yes		
		Recep. Rooms	2	Views	True		
		Studies	1				
		Furnished	No				