

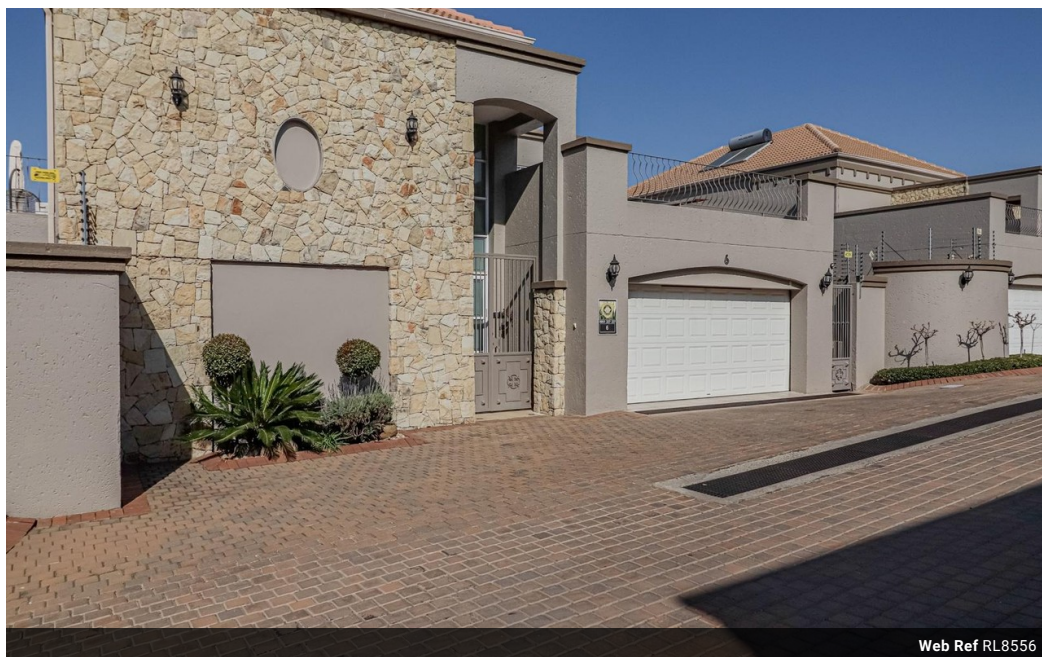


Bozena Taporowska
0827766778
bozena@meridianrealty.co.za

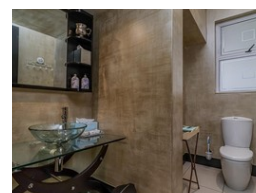
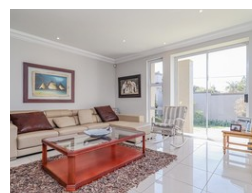
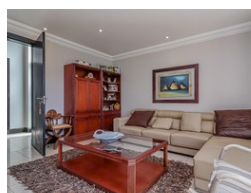
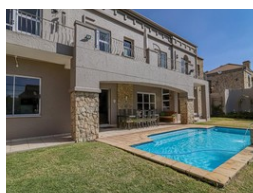
Contact **Virtual Office**

086 1732589

Loft Office 6
The Woodmill Lifestyle Centre
Vredenburg Road
Devonvallei
Stellenbosch
7600



Web Ref RL8556



R5,295,000

 4  3.5  4

Monthly Bond Repayment R54,654.38

Calculated over 20 years at 11% with no deposit.

Transfer Costs R440,257.00 **Bond Costs** R65,785.00

These calculations are only a guide. Please ask your conveyancer for exact calculations.

Monthly Levy R2,000 **Monthly Rates** R2,500

Contemporary 4-bedroom cluster in immaculate condition in boomed area.

Note that this is not a traditional Show House, and it will be managed differently due to COVID-19. The agent will be available for viewings by appointment this Sunday between 14:00 and 15:00. Please call or email the agent to discuss the Covid-19 protocols and to book your viewing slot. Visitors will be required to complete a COVID-19 screening questionnaire beforehand, and right of admission is reserved. Viewings will be spaced to ensure time for sanitation. Maximum of two people will be allowed at the property at any given point in time. All visitors must wear properly fitted masks, and sanitizer will be provided.

This is a secure, comfortable living in an exclusive complex. Downstairs from double volume entrance hall to the left into an enclosed family room overlooking an established garden. Along the passage onto...

Features

Pets Allowed Yes

Interior
Bedrooms 4
Bathrooms 3.5
Kitchens 1
Recep. Rooms 3
Studies 1

Exterior
Garages 4
Carports / Parkings 3
Security Yes
Dom. Accom. 1
Pool Yes
Views Yes

Sizes
Floor Size 410m²
Land Size 501m²

