

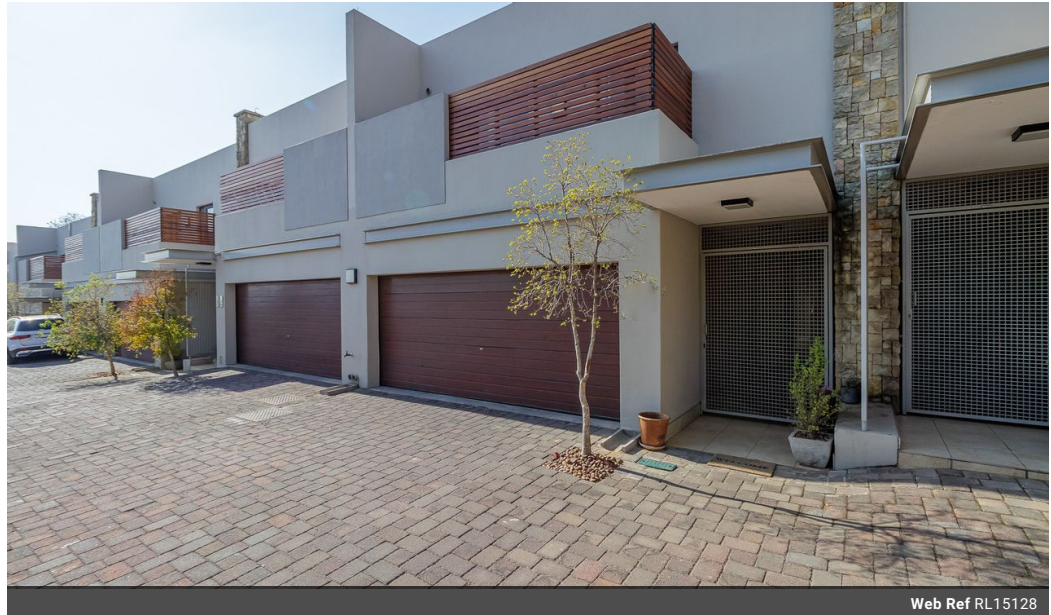


Bozena Taporowska
0827766778
bozena@meridianrealty.co.za

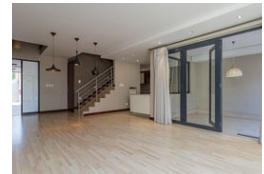
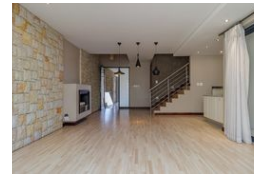
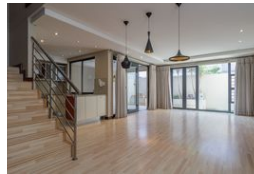
Contact **Virtual Office**

086 1732589

Loft Office 6
The Woodmill Lifestyle Centre
Vredenburg Road
Devonvallei
Stellenbosch
7600



Web Ref RL15128



R3,500,000

 3  2.5  2

Monthly Bond Repayment R36,126.59
Calculated over 20 years at 11% with no deposit.

Transfer Costs R221,714.00 **Bond Costs** R47,840.00
These calculations are only a guide. Please ask your conveyancer for exact calculations.

Monthly Levy R6,300 **Monthly Rates** R2,442

Urban living at its best! Townhouse in superb location on the Hyde Park border.

Contemporary 3-bed and 2.5-bath duplex situated in a sought-after complex! Stylish and secure lock-up-and-go lifestyle! Centrally located between Sandton and Rosebank CBDs.

Downstairs: double-volume entrance hall leading into open-plan living area with gas fireplace. Stack doors from the lounge open onto a patio with a splash pool. Well-appointed kitchen with granite countertops and separate scullery with space for three under-counter appliances. Double automated garage with direct access via the scullery to the property. Restroom.

Upstairs: well-sized master suite with access to the balcony. Full en-suite bathroom. Generously sized 2nd and 3rd bedrooms with access to a shared balcony and a full 2nd family bathroom.

24-hour manned security, plus daily patrol of the area by the Illovo Precinct Security. Visitors' parking in...

Features

Interior		Exterior		Sizes	
Bedrooms	3	Garages	2	Floor Size	203m ²
Bathrooms	2.5	Security	Yes	Land Size	3,721m ²
Kitchens	1	Pool	Yes		
Recep. Rooms	2	Views	False		
Furnished	No				