



Rose Tarr
0795706014
rose@meridianrealty.co.za

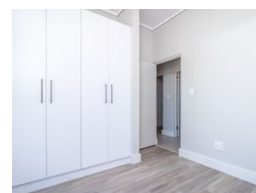
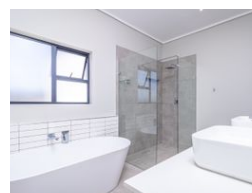
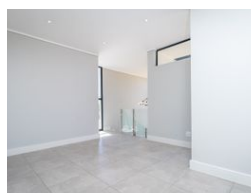
Contact **Virtual Office**

086 1732589

Loft Office 6
The Woodmill Lifestyle Centre
Vredenburg Road
Devonvallei
Stellenbosch
7600



Web Ref RL15333



R4,445,000

 3  2  2

Monthly Bond Repayment R45,880.77

Calculated over 20 years at 11% with no deposit.

Transfer Costs R336,959.00 **Bond Costs** R57,265.00

These calculations are only a guide. Please ask your conveyancer for exact calculations.

Monthly Levy R2,500 **Monthly Rates** R1,700

Charming 3 Bedroom Retreat with Helpers Room in the Heart of Fourways - Plan B

Please watch our video!

3-bedroom, 2 bathrooms, fashionable kitchen with modern décor, a separate scullery, lounge, lobby, pyjama lounge, study (dedicated home office), 2 guest WCs, balcony, double garage with 2 extra open parking spaces, plus helper's room with own bathroom.

Optional - pool and inverter.

House type – Erf 370 - Plan B

Price: R4,261,000 / VAT included - no transfer duty

Calculated over 20 years at 11.75%

Floor space – 282 m²

Land size – 415 m²

The Kingsley: a home where you can escape the chaos of city life and enjoy a peaceful retreat. Here, you will find a community that invites you to relax and enjoy life to the fullest. This exclusive off-plan development features a collection of 36 stunning freestanding homes, each designed for those who appreciate the finer things in life. With stand sizes ranging from...

Features

Pets Allowed	Yes		
Interior		Exterior	Sizes
Bedrooms	3	Garages	2
Bathrooms	2	Carports / Parkings	2
Kitchens	1	Security	Yes
Recep. Rooms	2	Dom. Accom.	1
Studies	1	Pool	No
Furnished	No	Views	False
			Floor Size 282m ²
			Land Size 415m ²