

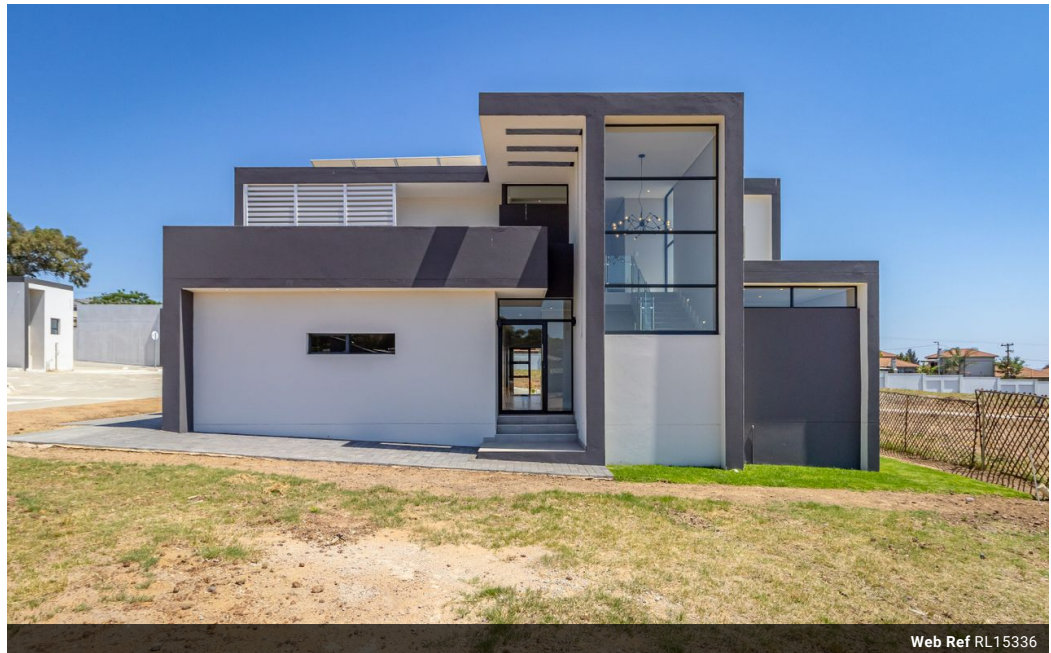


Rose Tarr
0795706014
rose@meridianrealty.co.za

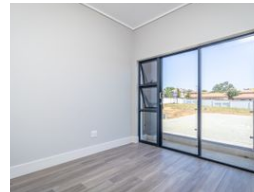
Contact **Virtual Office**

086 1732589

Loft Office 6
The Woodmill Lifestyle Centre
Vredenburg Road
Devonvallei
Stellenbosch
7600



Web Ref RL15336



R4,766,000

 4  3  2

Monthly Bond Repayment R49,194.10
Calculated over 20 years at 11% with no deposit.

Transfer Costs R374,437.00 **Bond Costs** R59,150.00
These calculations are only a guide. Please ask your conveyancer for exact calculations.

Monthly Levy R2,500 **Monthly Rates** R1,700

Elegant 4- Bedroom Family Home with Helpers Room in Fourways - Plan C1

Please watch our video!

4-bedroom, 3 bathrooms, fashionable kitchen with modern décor, a separate scullery, lounge, lobby, pyjama lounge, study (dedicated home office), 2 guest WC, balcony, double garage with 2 extra open parking spaces, helper's room with own bathroom. Optional: pool and inverter

House type – Erf 358 - Plan C1
Price R4,766,000 / VAT included - no transfer duty
Calculated over 20 years at 11.75%
Floor space – 308 m²
Land size – 515 m²

The Kingsley, a home where you can escape the chaos of city life and enjoy a peaceful retreat. Here, you will find a community that invites you to relax and enjoy life to the fullest. This exclusive off-plan development features a collection of 36 stunning freestanding homes, each designed for those who appreciate the finer things in life. With stand sizes ranging from 341 m²...

Features

Pets Allowed Yes

Interior

Bedrooms	4
Bathrooms	3
Kitchens	1
Recep. Rooms	2
Studies	1
Furnished	No

Exterior

Garages	2
Carports / Parkings	2
Security	Yes
Dom. Accom.	1
Pool	No
Views	False

Sizes

Floor Size	308m ²
Land Size	515m ²