

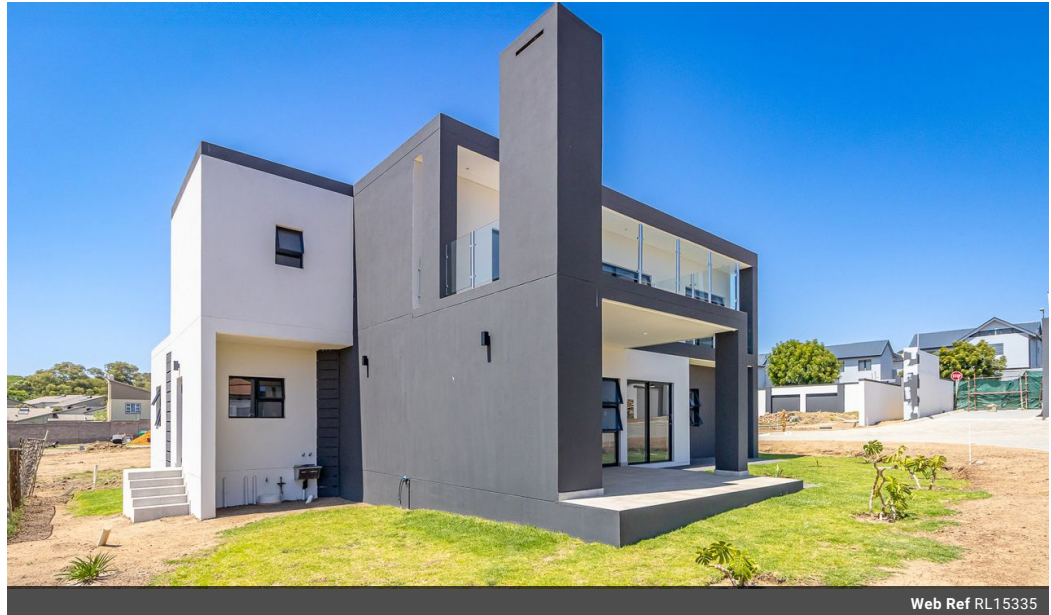


**Rose Tarr**  
0795706014  
rose@meridianrealty.co.za

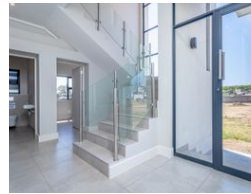
Contact **Virtual Office**

086 1732589

Loft Office 6  
The Woodmill Lifestyle Centre  
Vredenburg Road  
Devonvallei  
Stellenbosch  
7600



Web Ref RL15335



**R4,591,000**

 4  3  2

**Monthly Bond Repayment** R47,387.77

Calculated over 20 years at 11% with no deposit.

**Transfer Costs** R353,019.00 **Bond Costs** R57,265.00

These calculations are only a guide. Please ask your conveyancer for exact calculations.

**Monthly Levy** R2,500 **Monthly Rates** R1,700

### Elegant 4- Bedroom Family Home with Helpers Room in Fourways - Plan A1

Please watch our video!

4-bedroom haven with helper's room in Fourways - Plan A1

4-bedroom, 3 bathrooms, fashionable kitchen with modern décor, a separate scullery, lounge, lobby, pyjama lounge, study (dedicated home office), guest WC, balcony, double garage with 2 extra open parking spaces, plus helper's room with own bathroom.

Optional - pool and inverter

House type – Erf 357 - Plan A1

Price R4,410,000 / VAT included - no transfer duty

Calculated over 20 years at 11.75%

Floor space – 308 m<sup>2</sup>

Land size – 411 m<sup>2</sup>

The Kingsley, a home where you can escape the chaos of city life and enjoy a peaceful retreat. Here, you will find a community that invites you to relax and enjoy life to the fullest. This exclusive off-plan development features a collection of 36 stunning freestanding homes, each designed for those who appreciate

### Features

Pets Allowed		Yes			
<b>Interior</b>		<b>Exterior</b>		<b>Sizes</b>	
Bedrooms	4	Garages	2	Floor Size	308m <sup>2</sup>
Bathrooms	3	Carports / Parkings	2	Land Size	411m <sup>2</sup>
Kitchens	1	Security	Yes		
Recep. Rooms	2	Dom. Accom.	1		
Studies	1	Pool	No		
Furnished	No	Views	False		