

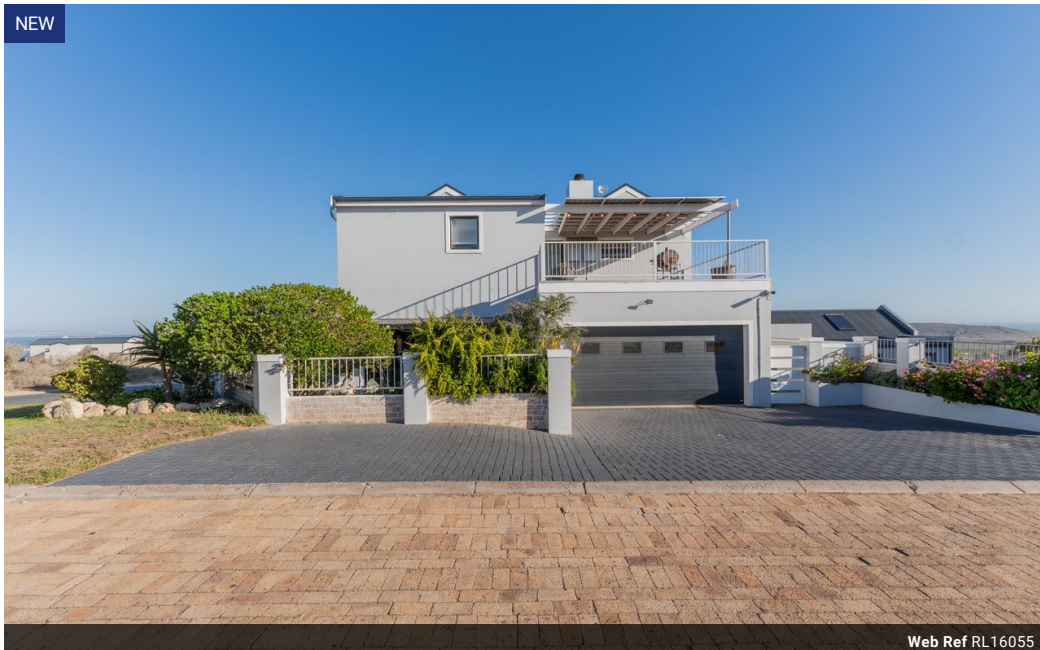


Soma Holloway-Carther
076 191 0363
soma@meridianrealty.co.za

Contact **Virtual Office**

086 1732589

Loft Office 6
The Woodmill Lifestyle Centre
Vredenburg Road
Devonvallei
Stellenbosch
7600



R3,199,000

🛏 6 🚿 5 🚗 2

Monthly Bond Repayment R33,019.71

Calculated over 20 years at 11% with no deposit.

Transfer Costs R184,269.00 **Bond Costs** R44,070.00

These calculations are only a guide. Please ask your conveyancer for exact calculations.

Monthly Levy R550 **Monthly Rates** R1,500

Contemporary Three-Part Home with Panoramic Ocean and Harbour Views

Experience elevated coastal living in this beautifully designed modern home, perfectly positioned to capture sweeping 180° views of Saldanha Bay Harbour and the Atlantic Ocean. Divided into three private living spaces, this property offers unmatched flexibility –ideal for extended family living or generating rental income.

Main Residence

Open-Plan Design: The heart of the home features a spacious kitchen fitted with both gas and induction cooktops, seamlessly flowing into the dining and living areas. A dedicated braai room with spectacular ocean views adds the perfect entertainment touch.

Generous Patio: A large front patio extends the living area outdoors ideal for relaxing or entertaining with the sea as your backdrop.

Bedrooms:

The main bedroom boasts breathtaking views, which can be enjoyed from both the room and its...

Features

Pets Allowed		Yes			
Interior		Exterior		Sizes	
Bedrooms	6	Garages	2	Floor Size	350m²
Bathrooms	5	Carports / Parkings	5	Land Size	580m²
Kitchens	3	Security	No		
Recep. Rooms	6	Pool	No		
Furnished	No	Views	True		