

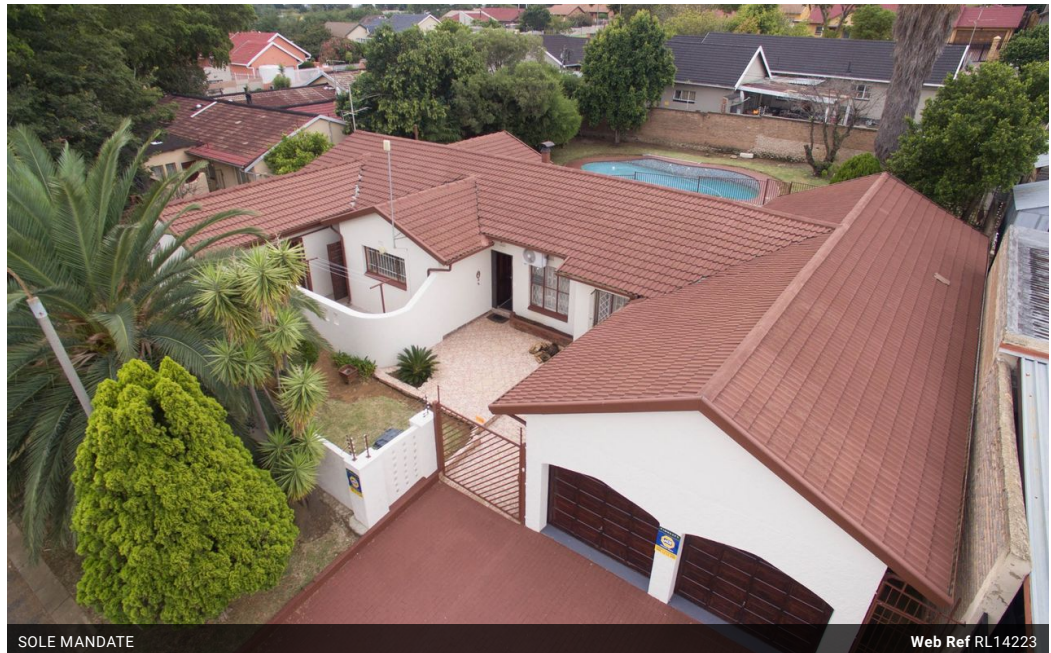


Solomon Moatshe  
0833069479  
solomon@meridianrealty.co.za

Contact **Virtual Office**

086 1732589

Loft Office 6  
The Woodmill Lifestyle Centre  
Vredenburg Road  
Devonvallei  
Stellenbosch  
7600



SOLE MANDATE

Web Ref RL14223



**R1,899,999**

 4  3  2

**Monthly Bond Repayment** R19,611.57  
Calculated over 20 years at 11% with no deposit.

**Transfer Costs** R69,205.94 **Bond Costs** R32,760.00

These calculations are only a guide. Please ask your conveyancer for exact calculations.

**Monthly Rates** R923

**A lovely and well-nurtured Home.**

**Interior:**

Cultivate lasting memories with family by choosing this perfectly intimate home. With passion and zeal, the designer graciously maintained this home with a touch of love. There are astounding finishing touches in the double lounges, entertainment room, and all four bedrooms and three bathrooms. The living rooms are equipped with underfloor heating. Oh my word, experience the comfort in the lounge; being able to display your furniture in this space is a winner. Save electricity yourself by enjoying a heat pump, which reduces water-heating costs by two-thirds, whilst having the conventional geyser as a backup (load shedding is a breeze for you). A beautifully made double garage with smart lithium-ion batteries helps overcome load shedding.

**Exterior:**

Take a journey, experience life outside, pause, relax, and enjoy the...

**Features**

**Pets Allowed** Yes

<b>Interior</b>	
Bedrooms	4
Bathrooms	3
Kitchens	1
Recep. Rooms	3
Furnished	No

<b>Exterior</b>	
Garages	2
Carports / Parkings	4
Security	Yes
Pool	Yes
Views	False

<b>Sizes</b>	
Floor Size	260m <sup>2</sup>
Land Size	794m <sup>2</sup>