



**Ronel Harrison**  
082 351 7270  
ronelh@meridianrealty.co.za

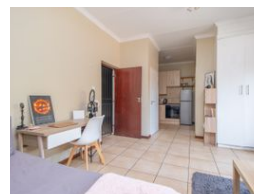
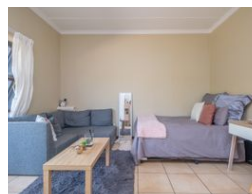
Contact **Virtual Office**

086 1732589

Loft Office 6  
The Woodmill Lifestyle Centre  
Vredenburg Road  
Devonvallei  
Stellenbosch  
7600



Web Ref RL15969



**R680,000**



**Monthly Bond Repayment** R7,018.88

Calculated over 20 years at 11% with no deposit.

**Transfer Costs** R23,730.00 **Bond Costs** R17,680.00

These calculations are only a guide. Please ask your conveyancer for exact calculations.

**Monthly Levy** R1,375 **Monthly Rates** R402

### Fantastic Investment Opportunity – Student Apartment in Prime Hatfield Location!

A perfect opportunity for investors or students! This bachelor apartment is ideally located in the heart of Hatfield, just a stone's throw from major transport routes, including bus stops and the Gautrain. It's also close to Hillcrest Shopping Complex and Menlyn Mall, offering convenience at your doorstep.

Situated on the first floor, this lock-up-and-go unit features built-in cupboards, a private bathroom with a shower and a well-equipped kitchen with a stove, oven, space for a washing machine and a fridge. The apartment is fully tiled for easy maintenance and boasts a private balcony—perfect for fresh air breaks or a relaxing coffee between study sessions. With pre-paid electricity and WiFi connectivity, this unit is designed for hassle-free living. The complex offers excellent security, including 24-hour guards, electric...

### Features

#### Interior

Bedrooms	1
Bathrooms	1
Kitchens	1
Furnished	No

#### Exterior

Carports / Parkings	1
Security	Yes
Pool	No
Views	True

#### Sizes

Floor Size	35m²
------------	------