



**Sally Searle**  
0828288929  
sally@meridianrealty.co.za



**Simon Revington**  
0722044486

simon@meridianrealty.co.za

Contact **Virtual Office**

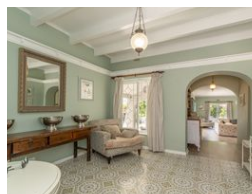
086 1732589

Loft Office 6  
The Woodmill Lifestyle Centre  
Vredenburg Road  
Devonvallei  
Stellenbosch  
7600



SOLE MANDATE

Web Ref RL15453



**R6,950,000**

 4  3

**Monthly Bond Repayment** R71,737.09  
Calculated over 20 years at 11% with no deposit.

**Transfer Costs** R628,266.00 **Bond Costs** R70,535.00  
These calculations are only a guide. Please ask your conveyancer for exact calculations.

**Monthly Rates** R1,108

### Suburban Villa with Sprawling Grounds

Sole Mandate

Tucked away behind lush coastal greenery lies this suburban villa. Set on a double-sized stand in popular Upper Robberg, the feeling is expansive and private. From the driveway to the reception area, the spacious lounge, sizeable bedrooms and tranquil covered patio, where better to settle and express yourself in Plettenberg Bay?

The main home is perfect for an average sized family, with 3 bedrooms and 2 bathrooms. The kitchen, while separate from the living areas, is adequately sized with all the necessities. The rooms are on the northern wing of the house, giving space and privacy from the living and entertainment areas. The double garage has been converted into an income producing short term rental suite which could also serve as an office or permanent residence for elderly parents or visitors. Or you could...

### Features

<b>Pets Allowed</b>	Yes			
<b>Interior</b>		<b>Exterior</b>		<b>Sizes</b>
Bedrooms	4	Carports / Parkings	4	Land Size
Bathrooms	3	Security	Yes	1,900m <sup>2</sup>
Kitchens	1	Pool	Yes	
Recep. Rooms	2	Views	False	
Furnished	No			

