

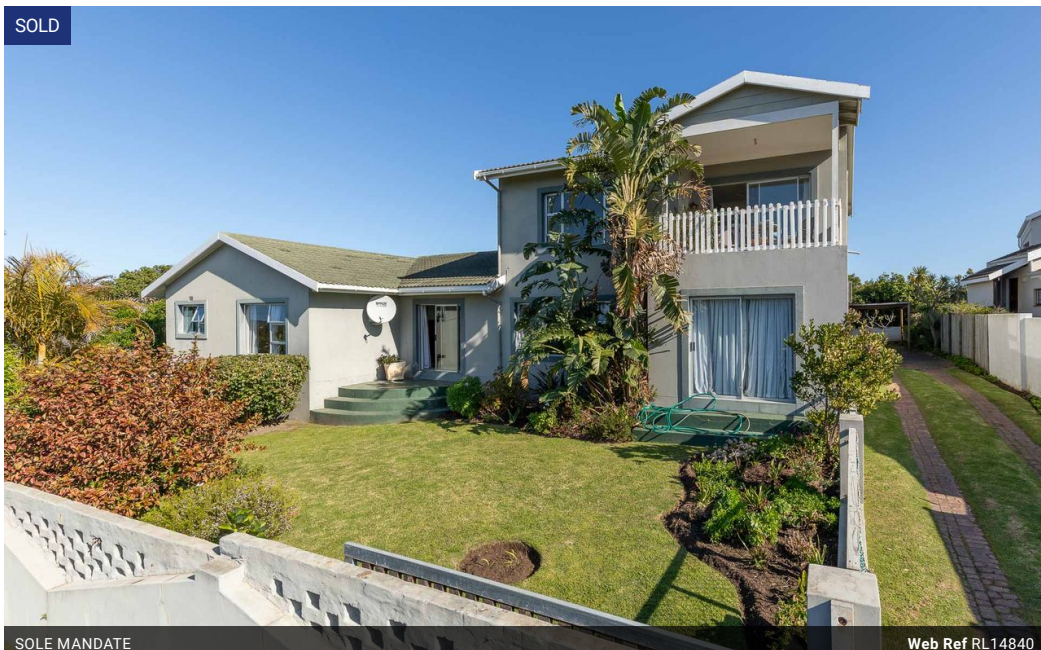


Paddy Dalzell
0836526004
paddy@meridianrealty.co.za

Contact **Virtual Office**

086 1732589

Loft Office 6
The Woodmill Lifestyle Centre
Vredenburg Road
Devonvallei
Stellenbosch
7600



SOLE MANDATE

Web Ref RL14840



R3,500,000

 5  3.5  2

Monthly Bond Repayment R36,126.59
Calculated over 20 years at 11% with no deposit.

Transfer Costs R221,714.00 **Bond Costs** R47,840.00

These calculations are only a guide. Please ask your conveyancer for exact calculations.

Monthly Rates R1,375

Abundance of accommodation and living areas with beautiful sea view

This home offers very comfortable and large living areas for the above-average-sized family. The layout of the home is also conducive to being used as an income earner by renting out one wing of the home. The main body of the home comprises a very large main bedroom with a large en-suite bathroom upstairs. On the ground floor, you have an open-plan area comprising the living, dining, and kitchen, with a laundry/scullery off the kitchen. Also on this level is an en-suite bedroom. What could be an independent wing comprises 3 bedrooms, 1 en-suite, and a separate/guest toilet, and a very large open-plan living area, which could convert into a lounge, dining, and kitchen area. A glass door leads out to an undercover patio and landscaped garden.

Situated in the ever-popular suburb of Upper Robberg, the position of this home offers...

Features

Pets Allowed	Yes			
Interior		Exterior		Sizes
Bedrooms	5	Garages	2	Floor Size
Bathrooms	3.5	Carports / Parkings	1	Land Size
Kitchens	1	Security	Yes	
Recep. Rooms	4	Pool	No	
Furnished	No	Views	True	