



Simon Revington
0722044486
simon@meridianrealty.co.za



Sally Searle
0828288929

sally@meridianrealty.co.za

Contact **Virtual Office**

086 1732589

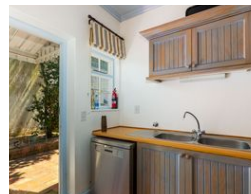
Loft Office 6
The Woodmill Lifestyle Centre
Vredenburg Road
Devonvallei
Stellenbosch
7600

UNDER OFFER



SOLE MANDATE

Web Ref RL14125



R5,500,000

 4  2.5

Monthly Bond Repayment R56,770.36
Calculated over 20 years at 11% with no deposit.

Transfer Costs R462,807.00 **Bond Costs** R65,785.00
These calculations are only a guide. Please ask your conveyancer for exact calculations.

Monthly Rates R1,948

Incredible Views and the Original #PlettFeeling

Sole Mandate.

If ever a home exuded everything that is quintessentially Plett, it is this one. Designed by renowned local architect Martin Rattray, the very building seems to have over the years absorbed life from the environment around it. And what an environment! The highlight of the home has to be the enclosed braai room/patio on the mezzanine level, with its 180-degree views of the Bay, Robberg, and the Piesang Valley below. Sunrises and sunsets at certain times of year that will melt any hardness in your heart.

The main home consists of 3 bedrooms and an en-suite on the northern side, with a central open-plan kitchen, scullery, lounge, and dining room (with fireplace) that acknowledges Mr. Rattray's foresight as to spatial trends. A full-size second bathroom is off of the main living area. On the mezzanine level, the...

Features

| | | | | | |
|---------------------|-----|---------------------|------|--------------|-------------------|
| Pets Allowed | Yes | | | | |
| Interior | | Exterior | | Sizes | |
| Bedrooms | 4 | Carports / Parkings | 2 | Floor Size | 280m ² |
| Bathrooms | 2.5 | Security | Yes | Land Size | 654m ² |
| Kitchens | 1 | Pool | No | | |
| Recep. Rooms | 2 | Views | True | | |
| Furnished | No | | | | |