



Sally Searle
0828288929
sally@meridianrealty.co.za



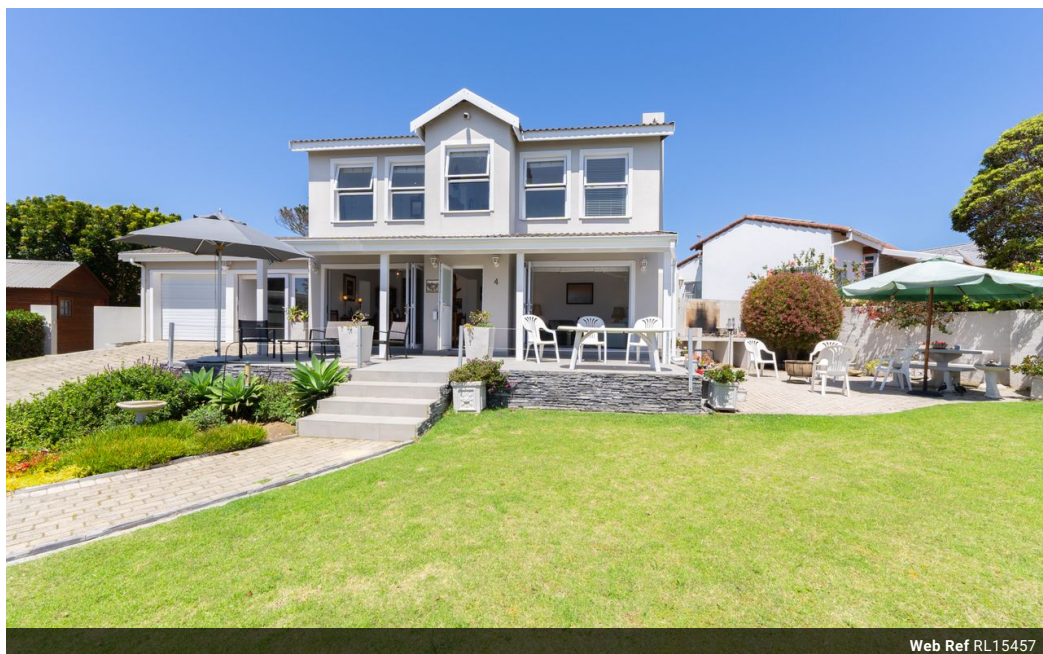
Simon Revington
0722044486

simon@meridianrealty.co.za

Contact **Virtual Office**

086 1732589

Loft Office 6
The Woodmill Lifestyle Centre
Vredenburg Road
Devonvallei
Stellenbosch
7600



Web Ref RL15457



R6,950,000

4 3.5 1

Monthly Bond Repayment R71,737.09
Calculated over 20 years at 11% with no deposit.

Transfer Costs R628,266.00 **Bond Costs** R70,535.00
These calculations are only a guide. Please ask your conveyancer for exact calculations.

Beautifully Renovated Home with Sea Views

JOINT MANDATE

If ever a home was "light and airy", this it is! Perfectly positioned slightly north-east to take advantage of the warmth and light, and have the prevailing south-westerly wind at the rear of the property, this is a home that beckons you in and invites you to open up the doors and windows, and soak up the beauty of Plettenberg Bay. The view of the mountains and sea is ever changing - some days crisp and blue other days are a haze of blues and grey.

With the living areas all downstairs, everyone will feel connected, whether it be in the kitchen (with its neat breakfast nook), lounges, study, covered patio or outside braai area. The manicured lawn invites impromptu picnics basking in the Garden Route sunshine. Upstairs, the bedrooms and bathrooms are sensibly located with the main en-suite enjoying the gorgeous...

Features

Pets Allowed		Yes			
Interior				Sizes	
Bedrooms	4			Floor Size	330m ²
Bathrooms	3.5			Land Size	966m ²
Kitchens	1				
Recep. Rooms	3				
Studies	1				
Furnished	No				
Exterior					
Garages	1				
Carports / Parkings	2				
Security	Yes				
Pool	No				
Views	True				