

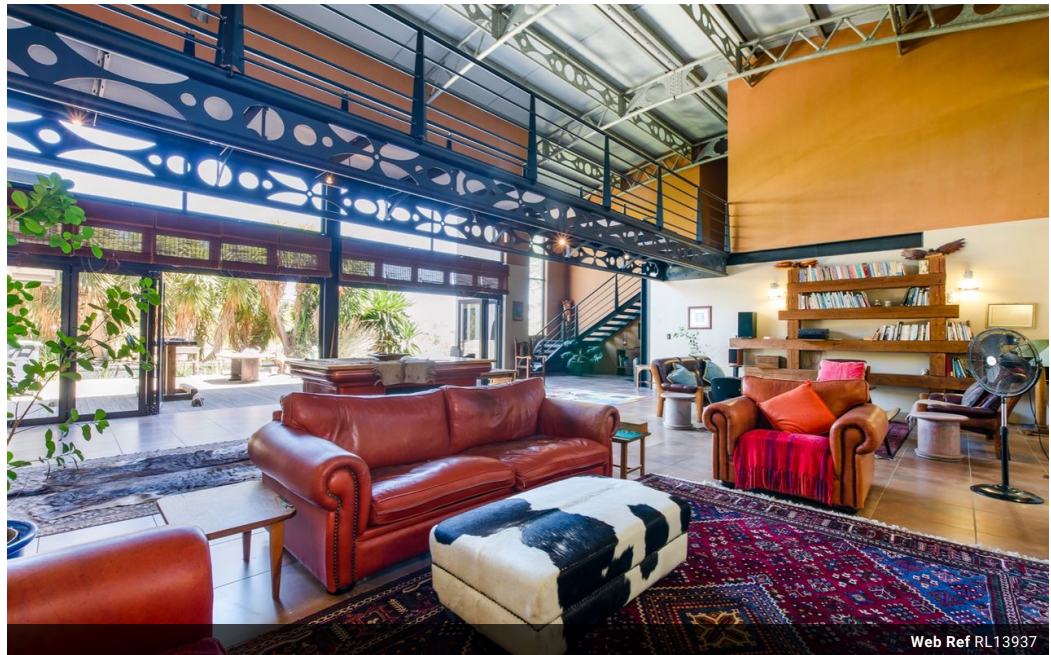


Lesley Adamson
0794998908
lesley@meridianrealty.co.za

Contact **Virtual Office**

086 1732589

Loft Office 6
The Woodmill Lifestyle Centre
Vredenburg Road
Devonvallei
Stellenbosch
7600



Web Ref RL13937



R14,335,000

 4  3.5  2

Monthly Bond Repayment R147,964.21
Calculated over 20 years at 11% with no deposit.

Transfer Costs R1,506,027.00 **Bond Costs** R108,535.00

These calculations are only a guide. Please ask your conveyancer for exact calculations.

Monthly Levy R1,900 **Monthly Rates** R6,300

4 Bedroom Home For Sale in Baronetcy Estate

Experience the tranquil serenity of a sensational game lodge style home in sought after Baronetcy Estate in Platteklouf. This unique home seamlessly blends industrial modern architecture with the rustic design features of a luxury bush lodge and delivers the innate feeling of a stay in the Kruger National Park. The outdoor living space complete with Koi Pond, majestic mountain views and mature trees is nestled alongside a lush green belt filled with local wildlife, weaver birds and melodious bird song.

As you enter this majestic home you are greeted by a truly expansive, double volume open living space with wall-to-wall stacker doors leading out to a private wooden deck entertainment area. The large, well-appointed chefs' kitchen is perfect for cooking up a feast for the whole family. With features such as granite counter...

Features

Pets Allowed	Yes				
Interior		Exterior		Sizes	
Bedrooms	4	Garages	2	Floor Size	505m ²
Bathrooms	3.5	Carports / Parkings	3	Land Size	968m ²
Kitchens	1	Security	Yes		
Recep. Rooms	2	Pool	No		
Furnished	No	Views	True		