



Simone de Wet
0727265521
simone.dewet@meridianrealty.co.za



Judy Joubert
0828736988

judy@meridianrealty.co.za

Contact **Virtual Office**

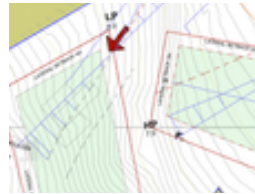
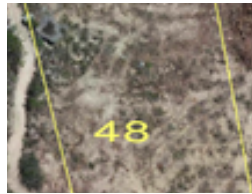
086 1732589

Loft Office 6
The Woodmill Lifestyle Centre
Vredenburg Road
Devonvallei
Stellenbosch
7600



SOLE MANDATE

Web Ref RL14530



R9,100,000

Monthly Bond Repayment R93,929.14
Calculated over 20 years at 11% with no deposit.

Transfer Costs R881,676.00 **Bond Costs** R84,785.00
These calculations are only a guide. Please ask your conveyancer for exact calculations.

Monthly Levy R4,500

Exclusive Residential Development on an Iconic Wine Farm.

Rhebokskloof Estate presents an idyllic, family-friendly lifestyle set on an iconic wine farm. With only 48 exclusive properties available and 185 hectares of vineyards, fynbos, and paddocks to explore, the estate offers a sense of space and brings you close to nature. Established in 1797, Rhebokskloof Estate is synonymous with award-winning wine, premier mountain bike trails, and its proximity to Paarlberg Nature Reserve.

Security is a top priority at Rhebokskloof Estate, with state-of-the-art measures in place offering secured freedom for you and your loved ones. Measures include surveillance cameras and 24-hour security patrols, ensuring that all residents can enjoy peace of mind.

24/7 Security patrols | Biometric access systems | 2m High perimeter fence | 37 Thermal cameras | Cutting-edge security technology

With...

Features