



**Simone de Wet**  
0727265521  
simone.dewet@meridianrealty.co.za



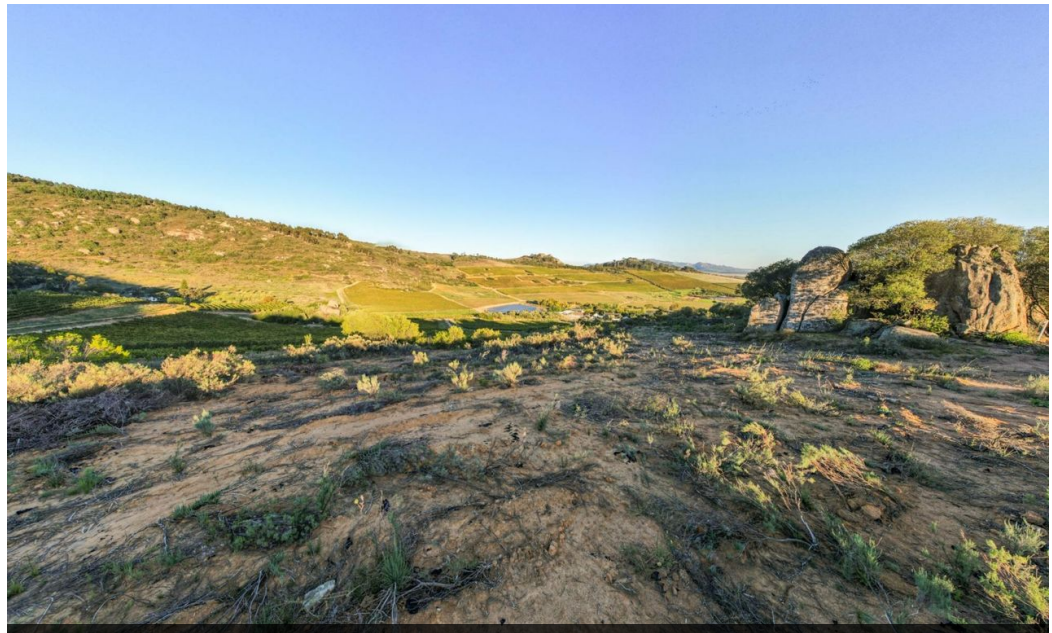
**Judy Joubert**  
0828736988

judy@meridianrealty.co.za

Contact **Virtual Office**

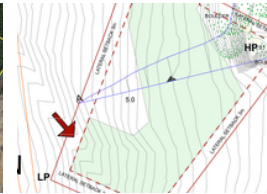
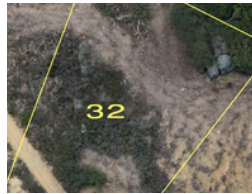
086 1732589

Loft Office 6  
The Woodmill Lifestyle Centre  
Vredenburg Road  
Devonvallei  
Stellenbosch  
7600



SOLE MANDATE

Web Ref RL14526



**R9,006,400**

**Monthly Bond Repayment** R92,963.02  
Calculated over 20 years at 11% with no deposit.

**Transfer Costs** R871,380.00    **Bond Costs** R84,785.00  
These calculations are only a guide. Please ask your conveyancer for exact calculations.

**Monthly Levy** R4,500

### Exclusive residential development on an iconic wine farm.

Rhebokskloof Estate presents an idyllic, family-friendly lifestyle set on an iconic wine farm. With only 48 exclusive properties available and 185 hectares of vineyards, fynbos, and paddocks to explore, the estate offers a sense of space and brings you close to nature. Established in 1797, Rhebokskloof Estate is synonymous with award-winning wine, premier mountain bike trails, and its proximity to Paarlberg Nature Reserve.

Security is a top priority at Rhebokskloof Estate, with state-of-the-art measures in place offering secured freedom for you and your loved ones. Measures include surveillance cameras and 24-hour security patrols, ensuring that all residents can enjoy peace of mind.

24/7 security patrols | Biometric access systems | 2m high perimeter fence | 37 thermal cameras | Cutting-edge security technology

With...

### Features