



**Simone de Wet**  
0727265521  
simone.dewet@meridianrealty.co.za



**Judy Joubert**  
0828736988

judy@meridianrealty.co.za

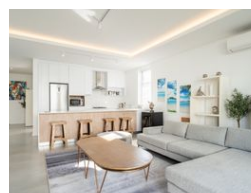
Contact **Virtual Office**

086 1732589

Loft Office 6  
The Woodmill Lifestyle Centre  
Vredenburg Road  
Devonvallei  
Stellenbosch  
7600



Web Ref RL15525



**R6,495,000**

**Monthly Bond Repayment** R67,040.64  
Calculated over 20 years at 11% with no deposit.

**Transfer Costs** R578,216.00    **Bond Costs** R70,535.00  
These calculations are only a guide. Please ask your conveyancer for exact calculations.

 2     2

### Ground floor, north-facing Apartment in Polo Village 2, Val de Vie Estate

This spacious, light-filled two-bedroom ground-floor apartment offers an inviting open-plan living space that flows effortlessly into the dining and kitchen areas. The contemporary kitchen is equipped with premium SMEG appliances, including a fridge/freezer, dishwasher, washer/dryer, microwave, and a chic breakfast bar, ideal for casual dining or entertaining. The master bedroom is a serene retreat, featuring an elegant en-suite bathroom and generous walk-in wardrobes. The second bedroom, perfect for guests or a home office, includes built-in storage and is served by a separate full bathroom. With its sophisticated design and seamless connection to the surrounding landscape, Polo Village Apartments II combines modern luxury with a tranquil setting.

The selection of luxury apartments in Polo Village Apartments Phase 2 makes the...

### Features

Interior		Exterior		Sizes	
Bedrooms	2	Carports / Parkings	1	Floor Size	104m <sup>2</sup>
Bathrooms	2	Security	Yes		
Kitchens	1	Pool	No		
Recep. Rooms	2	Views	False		
Furnished	No				