



Judy Joubert
0828736988
judy@meridianrealty.co.za



Simone de Wet
0727265521

simone.dewet@meridianrealty.co.za

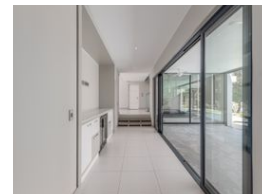
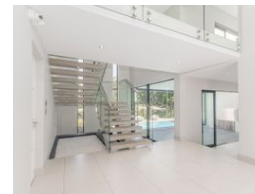
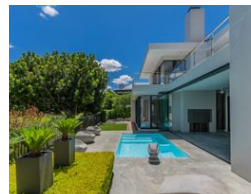
Contact **Virtual Office**

086 1732589

Loft Office 6
The Woodmill Lifestyle Centre
Vredenburg Road
Devonvallei
Stellenbosch
7600



Web Ref RL15504



R25,900,000

 4  4.5  3

Monthly Bond Repayment R267,336.79
Calculated over 20 years at 11% with no deposit.

Transfer Costs R3,039,371.00 **Bond Costs** R132,285.00
These calculations are only a guide. Please ask your conveyancer for exact calculations.

Monthly Levy R6,503

Contemporary home offering utmost privacy and a warm ambiance

Step into the entrance foyer, fit for large art pieces to take center stage, complemented by an abundance of natural light. The clever design of the front door and feature pillar ensures complete privacy within the home. As you enter, be greeted by the tranquil sound of water running from a beautiful water feature and koi pond.

A sun-drenched braai room beckons, leading you to a private pool and outdoor entertainment areas. Open up the large glass stacker doors to seamlessly connect the braai room with the outside area. Whether you prefer gas or wood burning, the built in braai is versatile to accommodate your braai needs.

For those seeking solitude, the sunken lounge offers a haven of privacy, surrounded by lush gardens and thoughtfully planted hedges. The open plan dining room, adorned with a cozy fireplace, provides a warm...

Features

Pets Allowed	Yes		
Interior		Exterior	Sizes
Bedrooms	4	Garages	3
Bathrooms	4.5	Carports / Parkings	1
Kitchens	1	Security	Yes
Recep. Rooms	3	Pool	Yes
Studies	1	Views	True
Furnished	No		
			Floor Size 513m ²
			Land Size 929m ²