



**Leoni Jordan**  
076 505 2052  
leoni@meridianrealty.co.za



**Veronica Hanekom**  
0835010839

veronica@meridianrealty.co.za

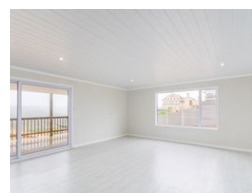
Contact **Virtual Office**

086 1732589

Loft Office 6  
The Woodmill Lifestyle Centre  
Vredenburg Road  
Devonvallei  
Stellenbosch  
7600



Web Ref RL15288



**R3,500,000**

 3  2  2

**Monthly Bond Repayment** R36,126.59

Calculated over 20 years at 11% with no deposit.

**Transfer Costs** R221,714.00 **Bond Costs** R47,840.00

These calculations are only a guide. Please ask your conveyancer for exact calculations.

**Monthly Rates** R1,500

### Brand new modern nutec home with sea and mountain views!

\*\*Please see video\*\*\*

Experience coastal living at its finest in this brand-new Nutec home, designed with modern finishes and crafted for comfort. This multi-level residence offers stunning sea and mountain views, best enjoyed from the wooden deck with a built-in braai, making it perfect for entertaining and relaxation. The open-plan living area flows into a spacious kitchen featuring soft grey finishes, a gas stove, electric oven, and a large grocery cupboard. There's room for a double-door fridge and three additional appliances, complemented by a double sink and a convenient prep bowl. Each bedroom boasts built-in cupboards and stylish laminated flooring, while the main bedroom includes a large en-suite bathroom with a shower, toilet, and basin. An additional full bathroom offers a bath, shower, toilet, and basin for added...

### Features

**Pets Allowed** Yes

#### Interior

Bedrooms	3
Bathrooms	2
Kitchens	1
Recep. Rooms	2
Furnished	No

#### Exterior

Garages	2
Carports / Parkings	2
Security	No
Pool	No
Views	False

#### Sizes

Floor Size	244m <sup>2</sup>
Land Size	666m <sup>2</sup>