

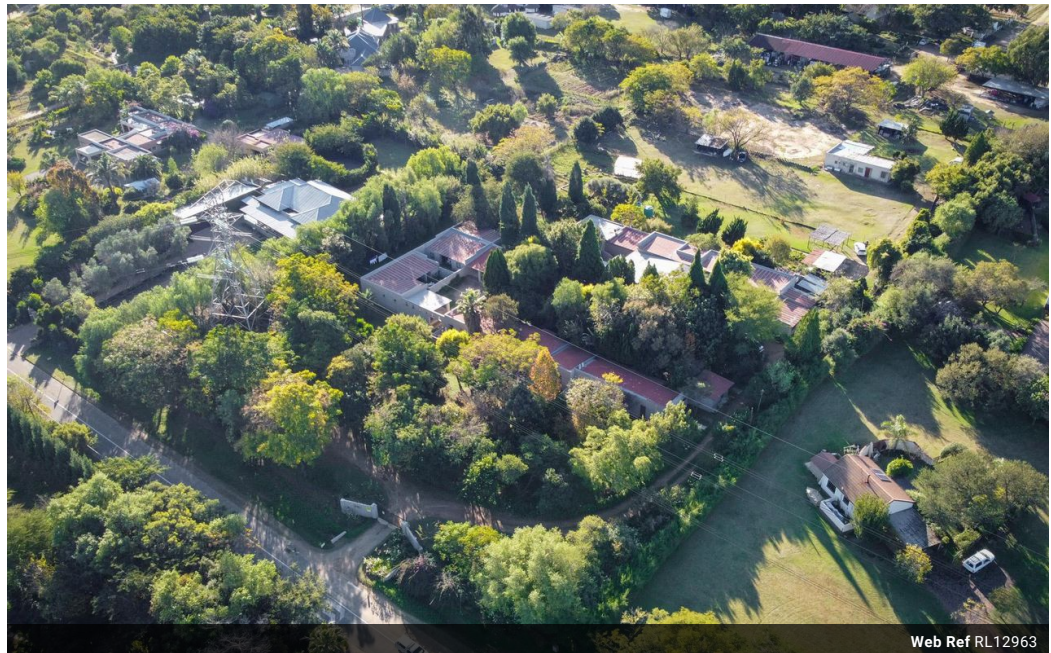


Kristy Strydom
 083 541 2220
 kristy@meridianrealty.co.za

Contact **Virtual Office**

086 1732589

Loft Office 6
 The Woodmill Lifestyle Centre
 Vredenburg Road
 Devonvallei
 Stellenbosch
 7600



Web Ref RL12963



R6,900,000

 3  2.5

Monthly Bond Repayment R71,221.00
 Calculated over 20 years at 11% with no deposit.

Transfer Costs R622,766.00 **Bond Costs** R70,535.00
 These calculations are only a guide. Please ask your conveyancer for exact calculations.

Monthly Levy R3,850 **Monthly Rates** R4,050

Equestrian Utopia - endless opportunities

Fantastic Rental Income of approximately R70 000 per mont, majestic property – 1.4327 hectares nestled in the heartlands of equestrian euphoria; this is simply a horse lover’s dream! This property boasts a sizeable main house accommodating three bedrooms, two and a half bathrooms, reception rooms, study, outside lapa, and indigenous garden. The 12 income-generating cottages (tenanted) are nestled between tall trees and lush grass. What a serene one-with-nature type lifestyle. The cottages offer a variety of living spaces – bed sitters, one/two- and three-bedroom units, including pre-paid meters, plentiful parking bays, and natural garden spaces to enjoy. Vast land offers endless opportunities for the discerning developer to maximise the potential of this amazing plot, ideally situated next door to the Gauteng Horse Association....

Features

Pets Allowed	Yes		
Interior		Exterior	Sizes
Bedrooms	3	Carports / Parkings	9
Bathrooms	2.5	Security	Yes
Kitchens	1	Dom. Accom.	1
Recep. Rooms	3	Pool	No
Studies	1	Views	False
Furnished	No		
			Land Size 14,327m ²

