



Ina Eksteen
081 735 2489
ina@meridianrealty.co.za

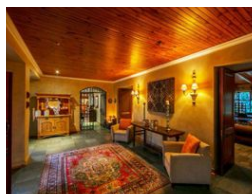
Contact **Virtual Office**

086 1732589

Loft Office 6
The Woodmill Lifestyle Centre
Vredenburg Road
Devonvallei
Stellenbosch
7600



Web Ref RL12007



R7,900,000

 4  4  3

Monthly Bond Repayment R81,542.88
Calculated over 20 years at 11% with no deposit.

Transfer Costs R738,228.00 **Bond Costs** R75,285.00
These calculations are only a guide. Please ask your conveyancer for exact calculations.

Monthly Rates R300

Luxurious Farm living in Cradle of Humankind

Find this exquisite 4 Bedroom Executive home on a small holding in the Cradle of Humankind.

Enter into this pristine house with state of the art finishes. Variety of lounges, living areas, dining room with fire place overlooking a landscaped luscious garden. Swimming pool surrounded by a landscaped garden, water features, entertainment areas, different patios and balconies. A Cellar to enjoy your imported or Cape wine.

A Bar with a games room leading onto the outside patio with braai and entertainment area is one of the attractions for family/friends to enjoy the warm summer afternoons/evenings.

The landscaped garden with large trees, exquisite plants and irrigation is watered by a borehole (pumping approx 1500 litre per hour). This property receives it's electricity via Eskom with 3 phase electrical...

Features

Pets Allowed	Yes			
Interior		Exterior		Sizes
Bedrooms	4	Garages	3	Floor Size
Bathrooms	4	Carports / Parkings	4	Land Size
Kitchens	1	Security	Yes	950m ²
Recep. Rooms	3	Dom. Accom.	1	45,000m ²
Studies	3	Pool	Yes	
Furnished	No	Views	True	

