



Thobe Msezane
 082 696 2487
 thobe@meridianrealty.co.za

Contact **Virtual Office**

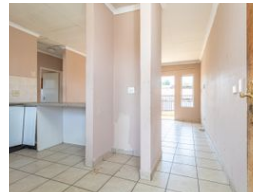
086 1732589

Loft Office 6
 The Woodmill Lifestyle Centre
 Vredenburg Road
 Devonvallei
 Stellenbosch
 7600



SOLE MANDATE

Web Ref RL15484



R699,999

 2  1  1

Monthly Bond Repayment R7,225.31
 Calculated over 20 years at 11% with no deposit.

Transfer Costs R23,730.00 **Bond Costs** R17,680.00

These calculations are only a guide. Please ask your conveyancer for exact calculations.

Monthly Levy R1,062 **Monthly Rates** R550

Contemporary Two Bedrooms Townhouse For Sale

When you are desperately looking for the property for your family, look no further because this two-bedroom townhouse is already available even for the occupational rent. Located in the heart of Birchleigh Boulevard and surrounded by all amenities required. This first-floor unit offers the perfect blend of elegance and comfort. It is ideal for investment purposes, the young professionals seeking for a peace of mind in the modern living spaces and the single individuals.

SPECIAL PROPERTY HIGHLIGHTS:

- * Open plan kitchen with a stove and the space for the fridge.
- * Spacious lounge perfectly for relaxation and leads you to the well sized balcony, which is suitable for entertainment and peaceful views of the area and the surroundings.
- * Two bedrooms with BIC and very easy to maintain tiled flooring.
- * One family sized bathroom...

Features

Interior		Exterior		Sizes	
Bedrooms	2	Garages	1	Floor Size	88m ²
Bathrooms	1	Carports / Parkings	1	Land Size	2,672m ²
Kitchens	1	Security	Yes		
Recep. Rooms	1	Pool	No		
Furnished	No	Views	False		