



Solomon Moatshe
0833069479
solomon@meridianrealty.co.za

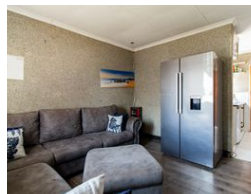
Contact **Virtual Office**

086 1732589

Loft Office 6
The Woodmill Lifestyle Centre
Vredenburg Road
Devonvallei
Stellenbosch
7600



Web Ref RL15045



R800,000

 3  1

Monthly Bond Repayment R8,257.51
Calculated over 20 years at 11% with no deposit.

Transfer Costs R25,898.00 **Bond Costs** R19,565.00

These calculations are only a guide. Please ask your conveyancer for exact calculations.

Monthly Levy R1,466

Amazing Townhouse!

Secure for your family a 3-bedroom townhouse home in the popular area of Ormonde. This is an area sought after by many families.

It is located near all amenities, and transport is a breeze for those using public transport. You have found yourself a home; you have found yourself peace.

Features

Interior		Exterior		Sizes	
Bedrooms	3	Carports / Parkings	3	Floor Size	58m ²
Bathrooms	1	Security	No	Land Size	7,422m ²
Kitchens	1	Pool	No		
Recep. Rooms	1	Views	False		
Furnished	No				