

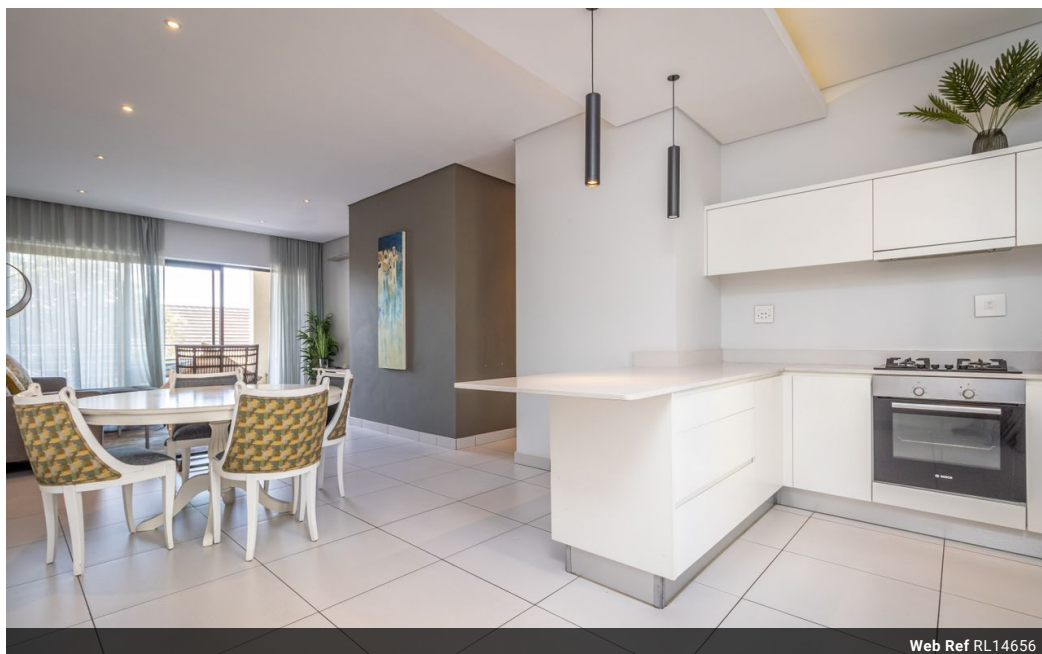


Bozena Taporowska
0827766778
bozena@meridianrealty.co.za

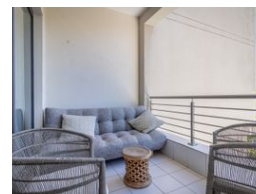
Contact **Virtual Office**

086 1732589

Loft Office 6
The Woodmill Lifestyle Centre
Vredenburg Road
Devonvallei
Stellenbosch
7600



Web Ref RL14656



R3,600,000



Monthly Bond Repayment R37,158.78

Calculated over 20 years at 11% with no deposit.

Transfer Costs R232,714.00 **Bond Costs** R47,840.00

These calculations are only a guide. Please ask your conveyancer for exact calculations.

Monthly Levy R4,400 **Monthly Rates** R2,600

Great apartment, 2 Bed 2 Bath with wonderful, warm ambiance!

114 m2 of elegant open plan living onto entertainers balcony with a Hyde Park sky views. The complex has modern amenities; excellent on site restaurant with room service, concierge, business centre, pool, equipped gym on the premises, lifts and pool, 24 hour security. The open plan lounge and dining areas are spacious and open via sliding doors onto a balcony. The Kitchen features modern island, Caesar-stone counter-tops, space for 3 appliances, gas hob, separate scullery with drying area. Well sized 2-bedrooms, 2-bathrooms with main full bathroom en-suite and second with shower.

The unit has prepaid electricity, Backup Inverter, lock up storeroom, 2-basement parking and is Fibre ready. No pets allowed. It is centrally situated between Rosebank and Sandton CBD, near excellent schools, shopping centers and all urban...

Features

Interior

Bedrooms	2
Bathrooms	2
Kitchens	1
Recep. Rooms	2
Furnished	No

Exterior

Carports / Parkings	2
Security	Yes
Pool	Yes
Views	True

Sizes

Floor Size	114m ²
Land Size	5,845m ²