

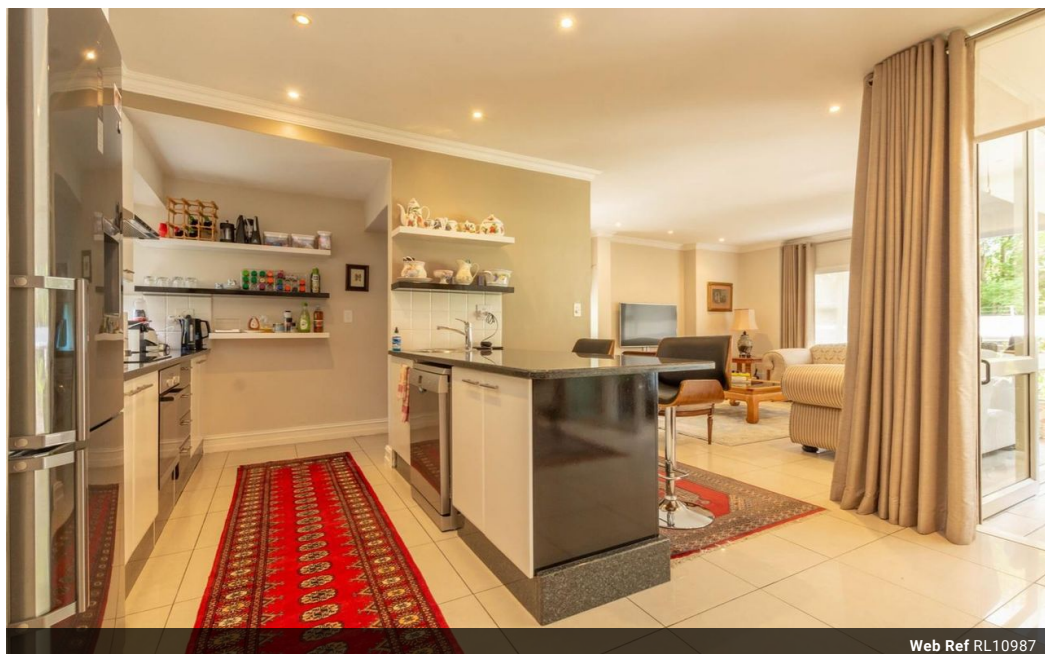


Bozena Taporowska
0827766778
bozena@meridianrealty.co.za

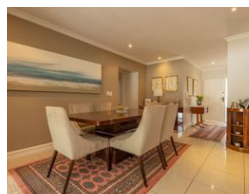
Contact **Virtual Office**

086 1732589

Loft Office 6
The Woodmill Lifestyle Centre
Vredenburg Road
Devonvallei
Stellenbosch
7600



Web Ref RL10987



R3,500,000

 2  2

Monthly Bond Repayment R36,126.59
Calculated over 20 years at 11% with no deposit.

Transfer Costs R221,714.00 **Bond Costs** R47,840.00
These calculations are only a guide. Please ask your conveyancer for exact calculations.

Monthly Levy R5,800 **Monthly Rates** R1,890

Contemporary apartment, 2 bedrooms, 3 receptions in superb location on the Hyde Park border

Please contact agent for property address.

North Facing, 169sqm, comfortable living! Perfect if you are down-scaling or upgrading! Apartment is renovated! Spacious open planned dining, lounge and study/TV room with tiled floors. Living area onto tranquil balcony with views and installed roller shutters. Open plan kitchen with separate scullery, granite counter tops and center island. Well sized master suite with ample of cupboard space, sliding door to the balcony, full bathroom en-suite. with heated towel rails and time controlled underfloor heating. Generously sized 2nd bedroom with walk in cupboards' area. Full 2nd bathroom. Aluminum windows throughout. Entrance to the apartment via remote controlled access to a private courtyard shared only by two units.

Some of the features include blinds throughout, cupboard in...

Features

| Interior | | Exterior | | Sizes | |
|--------------|----|---------------------|------|------------|---------------------|
| Bedrooms | 2 | Carports / Parkings | 2 | Floor Size | 169m ² |
| Bathrooms | 2 | Security | Yes | Land Size | 2,210m ² |
| Kitchens | 1 | Pool | No | | |
| Recep. Rooms | 2 | Views | True | | |
| Studies | 1 | | | | |
| Furnished | No | | | | |

