

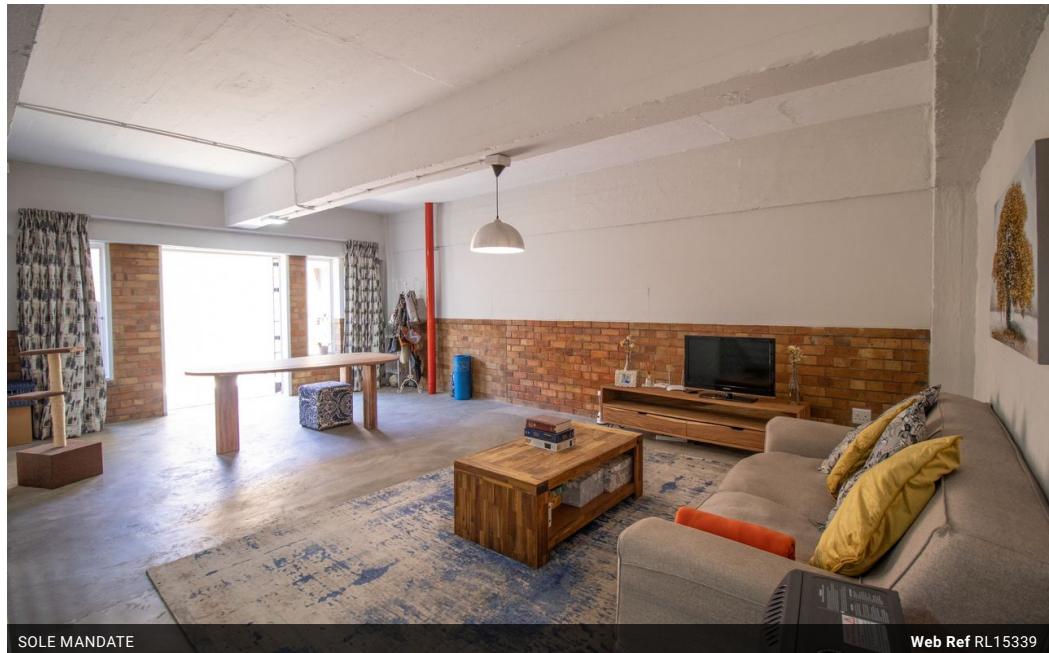


Solomon Moatshe
0833069479
solomon@meridianrealty.co.za

Contact **Virtual Office**

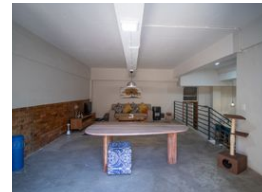
086 1732589

Loft Office 6
The Woodmill Lifestyle Centre
Vredenburg Road
Devonvallei
Stellenbosch
7600



SOLE MANDATE

Web Ref RL15339



R1,720,000

 2  2

Monthly Bond Repayment R17,753.64
Calculated over 20 years at 11% with no deposit.

Transfer Costs R56,239.00 **Bond Costs** R30,875.00

These calculations are only a guide. Please ask your conveyancer for exact calculations.

Monthly Levy R1,869

An opportune Property - A must see

Let us introduce you to the embodiment of contemporary inner-city living in the core of Gauteng in Braamfontein Werf, a place of creativity and productivity, whether you are writing a book or preparing for a thesis. An amazing ground-floor, spacious 2-bedroom, 2-bathroom loft apartment at Sontonga Lofts offers substantial space in every room, from the lounge to the bedrooms, embodying an energetic lifestyle immersed in the city's traditional charm.

Structural appetite

An elegant design: The upper living area embodies innovativeness, with an open-plan space featuring contemporary design; you are able to accommodate both the dining space and lounge, with space for entertainment as well.

One step lower: You move down to a fully equipped kitchen with a gas stove and a large island/banquet area.

Private outdoor space. Step through...

Features

Pets Allowed	Yes				
Interior		Exterior		Sizes	
Bedrooms	2	Carports / Parkings	1	Floor Size	128m ²
Bathrooms	2	Security	Yes	Land Size	12,929m ²
Kitchens	1	Pool	No		
Recep. Rooms	2	Views	False		
Furnished	No				