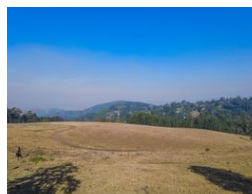
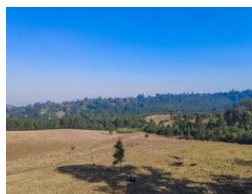
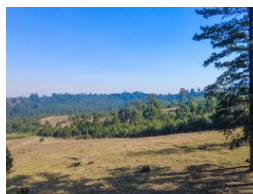


Tamaryn Strydom  
0824459989  
tamaryn@meridianrealty.co.za

Contact **Virtual Office**

086 1732589

Loft Office 6  
The Woodmill Lifestyle Centre  
Vredenburg Road  
Devonvallei  
Stellenbosch  
7600



**R3,950,000**

**Monthly Bond Repayment** R40,771.44  
Calculated over 20 years at 11% with no deposit.

**Transfer Costs** R275,550.00    **Bond Costs** R51,610.00  
These calculations are only a guide. Please ask your conveyancer for exact calculations.

### Land with panoramic views for development.

This property offers an amazing opportunity if you are looking for development prospects or to build your perfect large-scale home or to farm and harvest the land. The land has existing eucalyptus grandis trees and plenty of scope to provide space, views, and landscape for either the perfect home or a medium to large-sized development of free-standing homes. The land includes a water use license and is zoned for agriculture.

Two pieces are available:

Portion 1 Size = 82 hectares  
Portion 2 Size = 45 hectares

### Features