

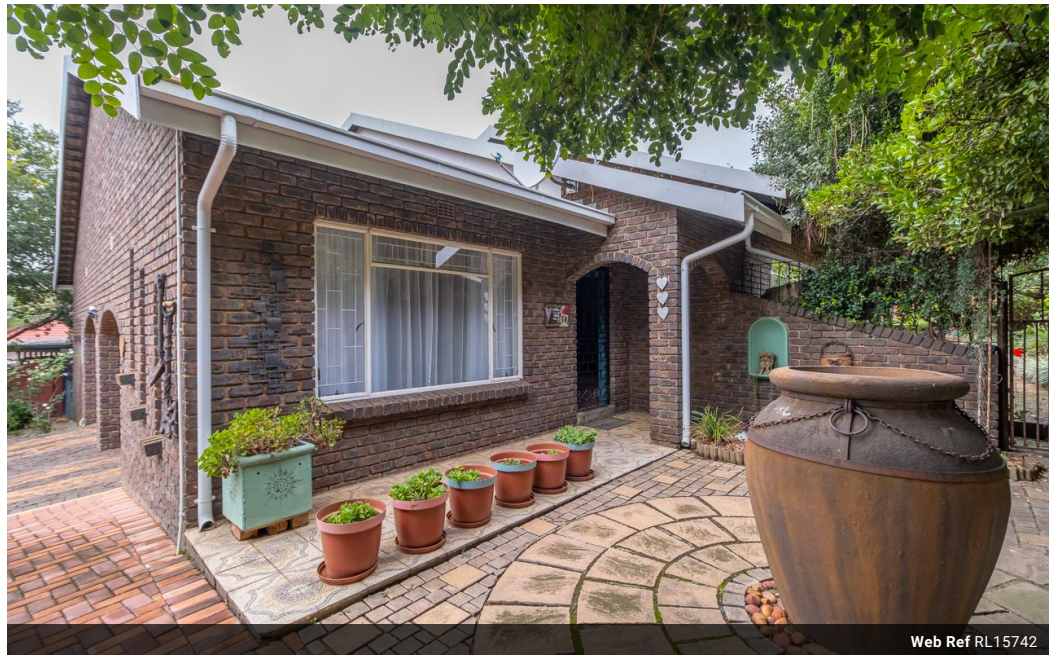


Leentjie Barnard
0790394873
leentjie@meridianrealty.co.za

Contact **Virtual Office**

086 1732589

Loft Office 6
The Woodmill Lifestyle Centre
Vredenburg Road
Devonvallei
Stellenbosch
7600



Web Ref RL15742



R1,820,000

 3  2.5  2

Monthly Bond Repayment R18,785.83
Calculated over 20 years at 11% with no deposit.

Transfer Costs R64,406.00 **Bond Costs** R32,760.00

These calculations are only a guide. Please ask your conveyancer for exact calculations.

Monthly Rates R2,005

Immaculate Family Home in the Heart of Heidelberg

This beautifully maintained family home is ideally situated in the heart of Heidelberg Central, just a stone's throw away from schools and Victoria Shopping Centre. Perfectly designed for low-maintenance, cost-effective living, this property offers both comfort and convenience. Upon entering, you are greeted by a spacious open-plan living, dining, and kitchen area, featuring an anthracite stove for cosy winter nights. The well-appointed kitchen boasts ample cupboard space, sleek granite countertops, a gas stove with an electric oven, a dishwasher connection, and a double sink – everything you need for a functional and stylish space. The separate dining/entertainment room includes a built-in braai and sliding doors that open to the outdoors, perfect for hosting friends and family. A spacious family room with air conditioning and...

Features

Pets Allowed		Yes			
Interior		Exterior		Sizes	
Bedrooms	3	Garages	2	Land Size	1,039m ²
Bathrooms	2.5	Carports / Parkings	2		
Kitchens	1	Security	Yes		
Recep. Rooms	3	Pool	No		
Studies	1	Views	False		
Furnished	No				