

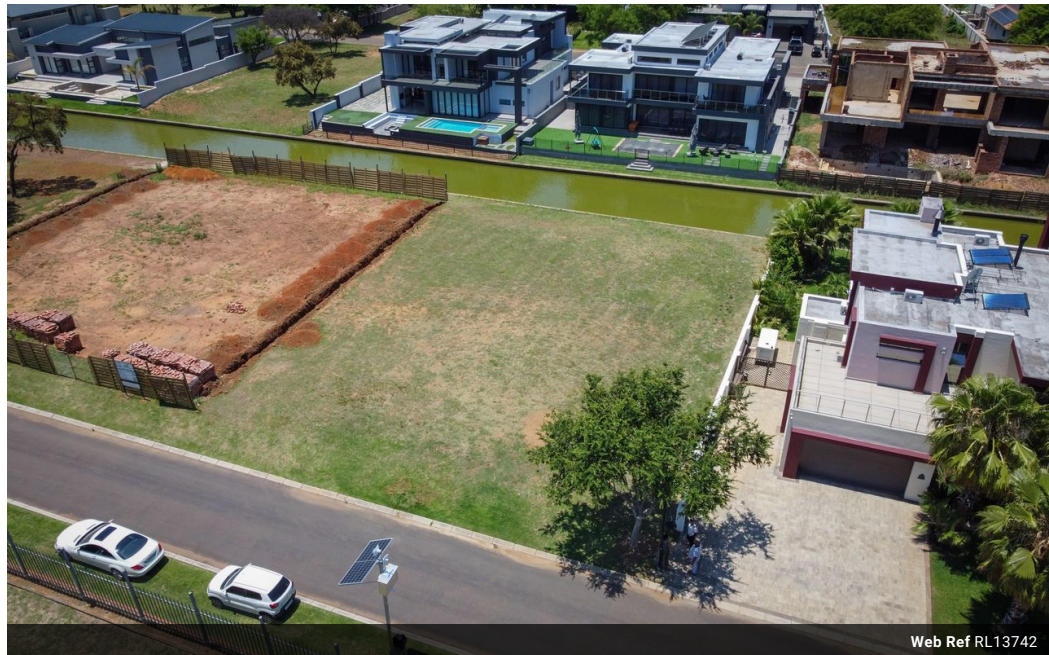


**Audrey Lenake**  
 0827991998  
 audrey@meridianrealty.co.za

Contact **Virtual Office**

086 1732589

Loft Office 6  
 The Woodmill Lifestyle Centre  
 Vredenburg Road  
 Devonvallei  
 Stellenbosch  
 7600



Web Ref RL13742



**R2,178,000**

**Monthly Bond Repayment** R22,481.06  
 Calculated over 20 years at 11% with no deposit.

**Transfer Costs** R88,627.00    **Bond Costs** R34,625.00  
 These calculations are only a guide. Please ask your conveyancer for exact calculations.

**Monthly Levy** R3,301    **Monthly Rates** R1,000

### Vacant Land In A Classy Estate In Hartbeespoort

If you feel adventurous to express your individual taste in your home design and create your own dream house , then this is the place. The Islands is a laid back, classy Estate which has most of the things one would anticipate to have in their surroundings. It is situated on 102 Ha of prime land on the Southern banks of Hartbeespoort Dam, adjoining Peacanwood Golf Estate, and referred to South Africa's inland Riviera, Everything revolves around the water.

**Key Features :**

- System of canals 6km of navigable water at various points in the Estate, with jetties to accommodate boats. The Island Estate is the boat lovers's dream.
- The developer was also mindful of the environment, were many indigenous trees were protected, and they made provision for 8 Hectares park, created as a communal area. Adjoining the vast park has sports...

### Features