

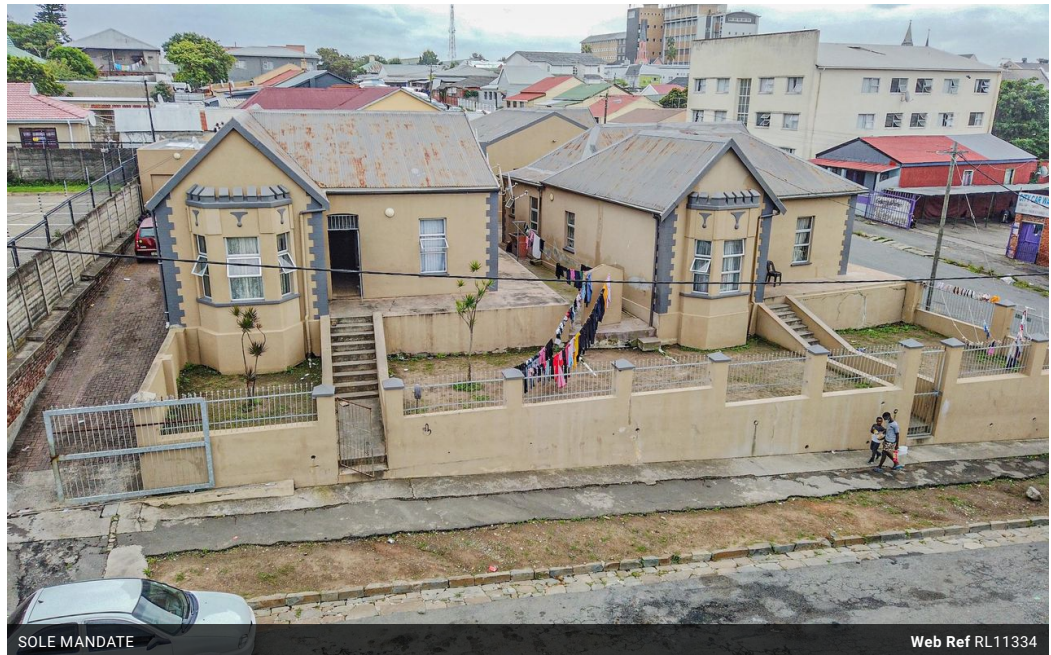


Greg Pitcher
0824499568
greg@meridianrealty.co.za

Contact **Virtual Office**

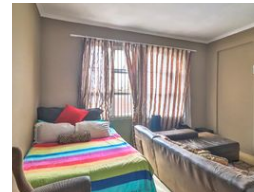
086 1732589

Loft Office 6
The Woodmill Lifestyle Centre
Vredenburg Road
Devonvallei
Stellenbosch
7600



SOLE MANDATE

Web Ref RL11334



POA

 26  8  1

3 BOARDING HOUSES in EAST LONDON

ON AUCTION

Duly instructed by the owner we offer for sale by public auction No.12 and 14 College Street, East London Central. Erf 14754 and Erf 14755.

Centrally situated close to Walter Sisulu University (WSU) 3 boarding houses, comprising of 26 rooms and a garage with an excellent rental income of R41 000 per month. The boarding houses stretch over to erven in an extent of 968sqm. The property is well maintained and neat.

Venue: On-site 12 and 14 College Street, East London Central.

Date / Time: Wednesday 20 April 2022 at 11am

Viewing: By appointment or 1 hour prior to Auction

GREAT INVESTMENT OPPORTUNITY!

Now - Live Online Bidding Available via Zoom - Pre-registration required. Contact us for further details.

TERMS: Covid 19 regulations apply. ID and proof of residence are required for registration. 5% Deposit,...

Features

Interior

Bedrooms	26
Bathrooms	8
Kitchens	4

Exterior

Garages	1
Carports / Parkings	4
Pool	No

Sizes

Land Size	968m ²
-----------	-------------------

