



Reinette Bessinger  
083 708 4383  
reinette@meridianrealty.co.za

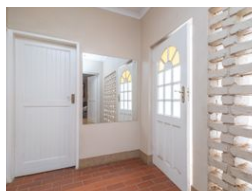
Contact **Virtual Office**

086 1732589

Loft Office 6  
The Woodmill Lifestyle Centre  
Vredenburg Road  
Devonvallei  
Stellenbosch  
7600



Web Ref RL15915



**R2,000,000**

3 2 2

**Monthly Bond Repayment** R20,643.77

Calculated over 20 years at 11% with no deposit.

**Transfer Costs** R75,206.00 **Bond Costs** R32,760.00

These calculations are only a guide. Please ask your conveyancer for exact calculations.

**Monthly Levy** R3,706

### Single-story townhouse ideal for young and old...and doggies!

A rare find. Watch the video. Perfect home for young, old, families, couples, singles... and pets. The largest unit (215sqm) in an intimate, secure complex of just 25 homes. The property boasts a generous private garden with mature trees, offering a serene retreat seldom seen in townhouse living. The open-plan living and dining area is bright and welcoming, featuring charming bay windows and direct access to a covered patio. A well-appointed kitchen provides ample storage, counter space, and room for modern appliances, including double eye-level oven and a four-plate electric stove.

Experience comfort and convenience in this spacious three-bedroom townhouse. All three bedrooms are exceptionally spacious, each with direct access to a patio or garden area. The master suite includes a walk-in closet and a full en-suite bathroom,...

### Features

<b>Pets Allowed</b>	Yes				
<b>Interior</b>		<b>Exterior</b>		<b>Sizes</b>	
Bedrooms	3	Garages	2	Floor Size	215m <sup>2</sup>
Bathrooms	2	Carports / Parkings	2	Land Size	500m <sup>2</sup>
Kitchens	1	Security	Yes		
Recep. Rooms	2	Pool	Yes		
Furnished	No	Views	False		