

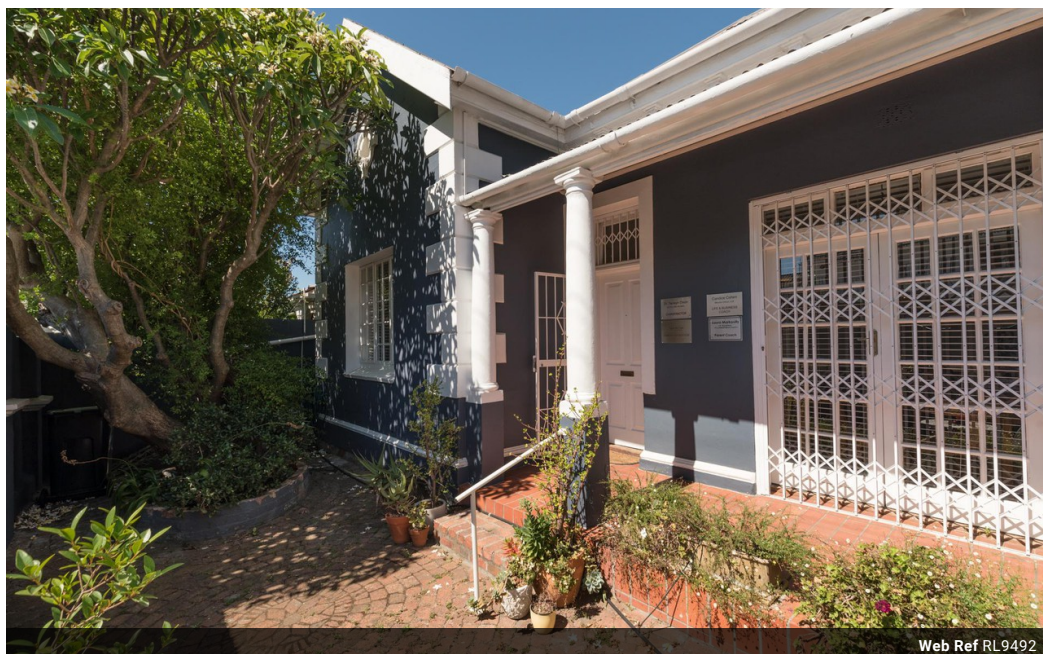


Peter Womersley
0833028397
peter@meridianrealty.co.za

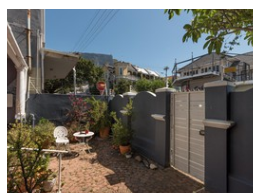
Contact **Virtual Office**

086 1732589

Loft Office 6
The Woodmill Lifestyle Centre
Vredenburg Road
Devonvallei
Stellenbosch
7600



Web Ref RL9492



R3,450,000

 3  1

Monthly Bond Repayment R35,610.50

Calculated over 20 years at 11% with no deposit.

Transfer Costs R216,214.00 **Bond Costs** R47,840.00

These calculations are only a guide. Please ask your conveyancer for exact calculations.

Monthly Rates R2,383.9

R3 450 000 Commercial Property Converted House currently used as Consulting rooms Vredehoek

POSITION POSITION POSITION. 5 Mins from Garden Centre just off highway into CBD.. This charming secure and sunny Victorian property is currently occupied by health practitioners. Suitable for a wide range of commercial ventures.

It comprises 4 air conditioned office spaces, a 5th office at the back and a storage cellar. You enter a quaint courtyard and are welcomed into a large reception area, Ideally located bordering Vredehoek & Gardens this position offers great exposure with plenty street parking. Full alarm and electric fencing.

Features

Interior

Bedrooms	3
Bathrooms	1
Kitchens	1
Recep. Rooms	1
Furnished	No

Exterior

Security	Yes
Pool	No
Views	False

Sizes

Land Size	136m ²
-----------	-------------------

