



Gabriella Bampeledi
0761845112
gabriella@meridianrealty.co.za

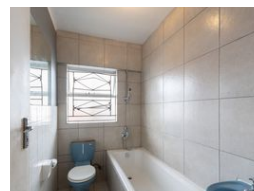
Contact **Virtual Office**

086 1732589

Loft Office 6
The Woodmill Lifestyle Centre
Vredenburg Road
Devonvallei
Stellenbosch
7600



Web Ref RL15377



R899,000

2 1

Monthly Bond Repayment R9,279.37
Calculated over 20 years at 11% with no deposit.

Transfer Costs R28,244.00 **Bond Costs** R21,450.00

These calculations are only a guide. Please ask your conveyancer for exact calculations.

Monthly Levy R1,900 **Monthly Rates** R397

Beautiful and Spacious Two Bedroom Apartment

The 2 bedroom apartment is set in the safe complex , ideally located in the heart of Maitland ,making it perfect for a lock-up-and-go lifestyle.

This charming unit offers a perfect blend of comfort and convenience. This home is ideal for investors and first-time home-buyers, featuring two spacious bedrooms and one well-appointed bathroom. The inviting lounge area and kitchen create a welcoming space for relaxation and entertaining.

Priced to sell, this property offers a great size with modern amenities that add a touch of serenity to everyday living.

For added convenience, the unit includes a open parking space, ensuring ample parking for you and your guests.

Don't miss out on this fantastic opportunity—schedule your viewing by appointment today!

Features

Interior

| | |
|--------------|----|
| Bedrooms | 2 |
| Bathrooms | 1 |
| Kitchens | 1 |
| Recep. Rooms | 1 |
| Furnished | No |

Exterior

| | |
|---------------------|-------|
| Carports / Parkings | 1 |
| Security | No |
| Pool | No |
| Views | False |

Sizes

| | |
|------------|---------|
| Floor Size | 71m² |
| Land Size | 1,606m² |

