

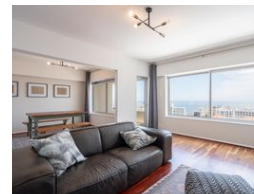


Matt Habib
0820566144
matt@meridianrealty.co.za

Contact **Virtual Office**

086 1732589

Loft Office 6
The Woodmill Lifestyle Centre
Vredenburg Road
Devonvallei
Stellenbosch
7600



R5,850,000

Monthly Bond Repayment R60,383.02
Calculated over 20 years at 11% with no deposit.

Transfer Costs R501,307.00 **Bond Costs** R65,785.00
These calculations are only a guide. Please ask your conveyancer for exact calculations.

 2  2  1

Stunning Two Bedroom 4Th Floor Apartment With Unbeatable Views And Loads Of Potential

The perfect apartment in the perfect location is waiting for you! Uninterrupted sea views that will last lifetimes to come, this apartment oozes light, serenity and potential like no other. North Facing. Large open-plan lounge and living room with balcony where you can enjoy endless views of the ocean - safe from any future developments building in front of you, this building is an investment just for the views! The kitchen is quaint and spacious but could do with a little TLC. There are two spacious bedrooms and two bathrooms, one being a guest toilet, the other being the main bathroom. The flooring in this unit was recently redone with hardwood throughout - and with a little more TLC ,this apartment could be absolutely sensational.

Portman Place is a highly sought-after complex in Bantry Bay, not only for its unbeatable...

Features

Pets Allowed	Yes				
Interior		Exterior		Sizes	
Bedrooms	2	Garages	1	Floor Size	104m ²
Bathrooms	2	Security	Yes		
Kitchens	1	Pool	No		
Recep. Rooms	2	Views	True		
Furnished	No				

