

Letitia Willemse
0832610746
letitia@meridianrealty.co.za

Contact **Virtual Office**

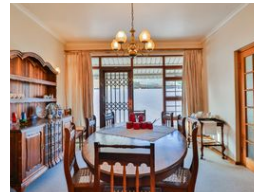
086 1732589

Loft Office 6
The Woodmill Lifestyle Centre
Vredenburg Road
Devonvallei
Stellenbosch
7600



SOLE MANDATE

Web Ref RL15522



R2,675,000

 3  2  2

Monthly Bond Repayment R27,611.04
Calculated over 20 years at 11% with no deposit.

Transfer Costs R131,887.00 **Bond Costs** R40,300.00

These calculations are only a guide. Please ask your conveyancer for exact calculations.

Monthly Rates R1,200

Spacious 3-bedroom + study, family home in De La Haye – perfect location near Bellville High School.

Discover this generously sized family home, ideally located within walking distance of Bellville High School, in the sought-after De La Haye neighbourhood. This property combines comfort, space, and security, making it an excellent investment for your family.

Key features:

Secure living: Fully enclosed with electric fencing for peace of mind and an alarm system.

Spacious interiors: A welcoming foyer leads to a separate study and an extra-large lounge with picturesque windows overlooking the back garden.

The kitchen boasts granite countertops, ample cupboard space, and a separate scullery for washing equipment.

The separate dining room is adjacent to the kitchen, with a door between the living space. The lounge area features carpets and extra-large windows overlooking the garden.

A cosy separate TV room with parquet flooring, a...

Features

Pets Allowed	Yes				
Interior		Exterior		Sizes	
Bedrooms	3	Garages	2	Floor Size	263m ²
Bathrooms	2	Security	Yes	Land Size	1,011m ²
Kitchens	1	Pool	No		
Recep. Rooms	3	Views	False		
Studies	1				
Furnished	No				