

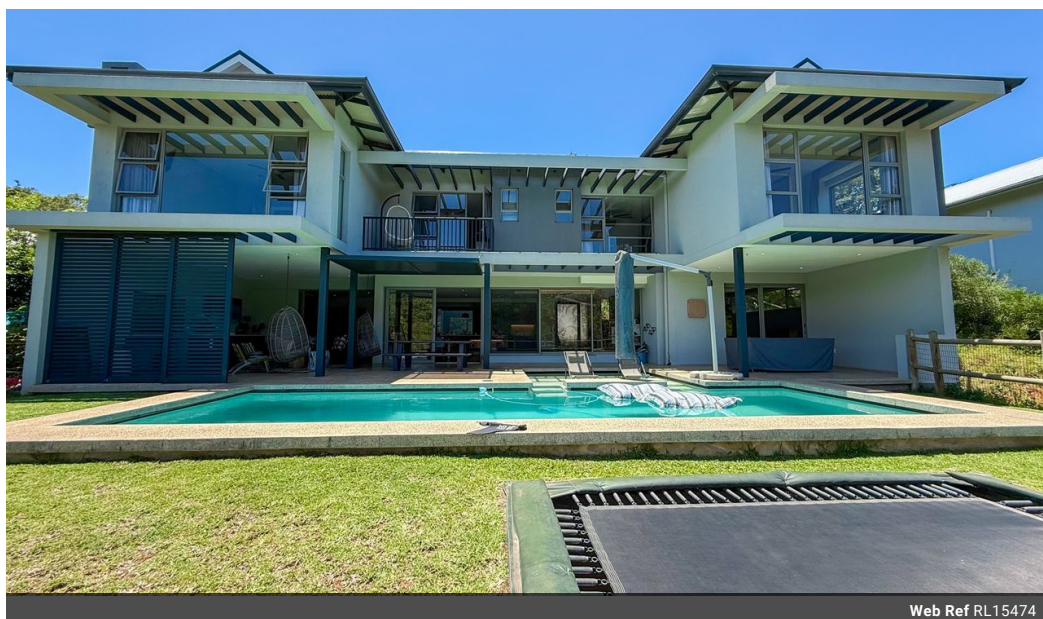


**Pen Balfour**  
073 244 9858  
pen@meridianrealty.co.za

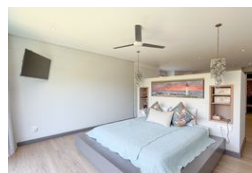
Contact **Virtual Office**

086 1732589

Loft Office 6  
The Woodmill Lifestyle Centre  
Vredenburg Road  
Devonvallei  
Stellenbosch  
7600



Web Ref RL15474



**R12,900,000**

**Monthly Bond Repayment** R133,152.30  
Calculated over 20 years at 11% with no deposit.

**Transfer Costs** R1,316,752.00    **Bond Costs** R99,035.00  
These calculations are only a guide. Please ask your conveyancer for exact calculations.

 5     5.5     3

**Monthly Levy** R3,180    **Monthly Rates** R3,800

### Exquisite Contemporary Entertainers Home In Simbithi Estate

This stunning contemporary home, located in the sought-after Simbithi Eco Estate, offers a perfect blend of modern design and natural beauty. Situated close to nature trails and essential amenities, it features spacious open-plan living areas with soaring ceilings and large glass doors that seamlessly connect to a spacious deck overlooking a lush greenbelt. The home includes four bedrooms, each with an en-suite bathroom, a pyjama lounge, an atrium, and a separate cottage/office space—ideal for remote work or guests. Natural light floods the interior, creating a bright, airy atmosphere that merges coastal living with eco-friendly design. With a mix of steel, glass, and textured walls, the home reflects current international design trends, offering both style and functionality. Expansive parking, a garage, and a serene,...

### Features

Pets Allowed		Yes			
<b>Interior</b>		<b>Exterior</b>		<b>Sizes</b>	
Bedrooms	5	Garages	3	Floor Size	600m <sup>2</sup>
Bathrooms	5.5	Carports / Parkings	2	Land Size	1,318m <sup>2</sup>
Kitchens	1	Security	Yes		
Recep. Rooms	3	Pool	Yes		
Studies	1	Views	True		
Furnished	No				

