



Tumi Mthembu
0723209115
tumi@meridianrealty.co.za

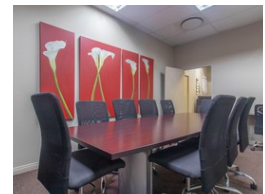
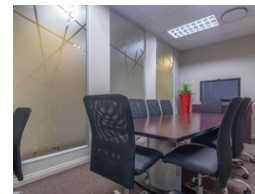
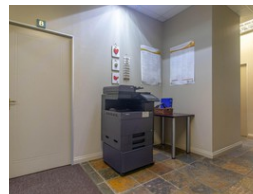
Contact **Virtual Office**

086 1732589

Loft Office 6
The Woodmill Lifestyle Centre
Vredenburg Road
Devonvallei
Stellenbosch
7600



Web Ref CL250



R4,500 per m²

Gross Monthly Rental R4,500 Excl. VAT

 0  1

We offer solutions for a variety of office needs.

Looking for a space for your business look no further. We provide affordable serviced office space in one of the fastest growing office nodes in the Johannesburg area. The Gables Office Estate is situated close to the 14th Avenue interchange on the N1. The offices are within a 5 km radius of the following Corporate head offices - MTN, Wesbank, FNB home loan, Clover, Absa as well as shopping and medical centres and many more.

- Gables has eight fully serviced offices incorporating the following benefits:
- Furnished and air-conditioned offices.
 - Industrial size generator with automated switch-on within 60 seconds of a power outage
 - Modern printing station including scan, print, fax, and photocopy facilities.
 - Receptionist from Monday to Friday
 - Internet connectivity

Features

Building Name	Gables Office Estate				
Zoning	Commercial				
Interior		Exterior		Sizes	
Air Conditioning	Yes	Security	Yes	Floor Size	188m ²
		Open Parking Bays	1	Land Size	7,107m ²

