

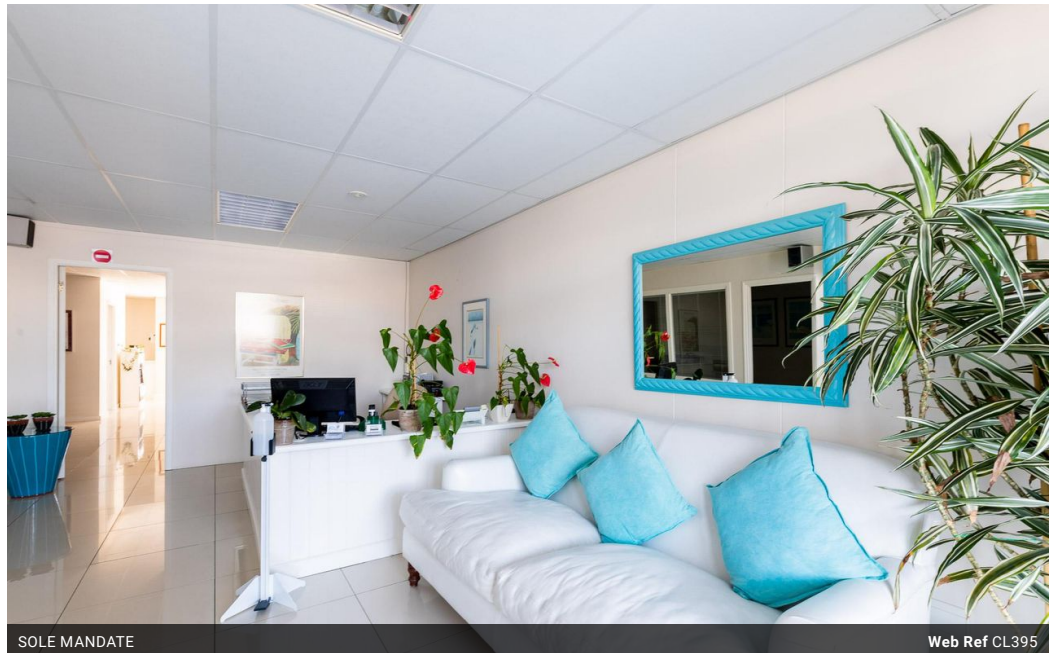


**Robert Auersperg**  
072 246 9929  
robert@meridianrealty.co.za

Contact **Virtual Office**

086 1732589

Loft Office 6  
The Woodmill Lifestyle Centre  
Vredenburg Road  
Devonvallei  
Stellenbosch  
7600



SOLE MANDATE

Web Ref CL395



**R2,415,000**

Monthly Levy R4,416 Excl. VAT

Monthly Rates R781 Excl. VAT

 0  0

### Calling professionals

This beautifully appointed ground floor office space would be ideally suited to a professional practice/business i.e., Doctor, Dentist, Physiotherapist, Chiropractor, Attorney, Quantity surveyor, Insurance, and investment etc. Situated in the heart of Plettenberg Bay and within walking distance of everything in the CBD. This unit has been tastefully and meticulously fitted out utilising all 124 square meters to maximum benefit and with high end finishes like porcelain tiles throughout. There is a private boardroom, beautiful reception open plan and a closed plan space consisting of 4 office areas and a Filing room/store room. There is a kitchenette and a toilet with a basin.

An added bonus is a private walled in patio. All of this in a secure office environment. There is a parking bay underground and an

### Features

<b>Title</b>	Freehold
<b>Zoning</b>	Commercial
<b>Sizes</b>	
Floor Size	126m <sup>2</sup>

